



CREATIVE FURNISHING

CREATIVE FURNISHING COMPANY PROFILE

创遊 · 简介



CREATIVE FURNISHING COMPANY PROFILE

ONE STOP SOLUTION



CONTENTS

目录

01

Overview

概述

About "CREATIVE"
关于“创·遊”

Our Team
我们的团队

Scope of Service
服务范围

Service Process
服务流程

02

Featured Case

精选案例

Representative Cases List
历年经典案例清单

Turnkey Hotel Cases
交钥匙酒店案例

Design Cases
设计案例

03

Cooperator

合作伙伴

04

Joinery Furniture

固装单品

05

Designer Furniture

设计师单品



Overview 概述



内容
关于“创·遊”
我们的团队
服务范围
服务流程

Content
About “Creative Furnishing”
Our Team
Scope of Service
Service Process

About "CREATIVE FURNISHING"

关于“创·遊”

Creative Furnishing is a branch of AOFER FURNISHING, specialized in providing interior turnkey solution for hospitality projects. Our solutions cover interior design, manufacture, supply, deliver & install joinery and FF&E items which includes but not limited to fixed & loose furniture, lighting, artwork, flooring, wall covering, fabricating etc.

With years of rich and solid experience, superior quality and advanced international perspective., CFL is leading the furnishing industry, as well as acquiring all customers' recognition.

Our market covers Asia, Middle East, North America, USA, Brazil, Southeast Asia etc.

We adhere to perfect details, insist on strict quality control system, we aim to achieve the common value with our customers, that's how we respond to their trust.

Our Vision: Build the Beautiful hotel, Wonderful world.

Our Mission: Turn the interior design into reality efficiently, world widely.

Our Value: 361°polish on each detail, handover your hospitality projects more than expectation.

创·遊是黄山市奥菲家具有限公司的子品牌之一，着重于为酒店业主提供全面的室内解决方案。我们的方案覆盖了室内设计、生产、配套供应、安装室内的软、硬装产品，包括但不限于：固装家具、活动家具、灯饰、墙画、地毯、墙纸、布艺加工等。

凭借着多年来丰富、扎实的行业经验，创·遊以卓越的品质和超前的国际视野领先同行。与时俱进的美学创新和极致追求细节的卓越品质服务理念，得到了客户及行业的一致青睐和高度认同。

我们的服务范围已涵盖亚洲、中东、北美、美国、巴西、东南亚等十几个不同国家的不同城市。每一份荣誉，都离不开客户的信赖。作为谛丰人，我们一直秉承追求完美细节的宗旨，坚持严格的产品细节和质量控制体系，务求做到尽善尽美，满足客户定制需求，实现共同价值。

我们的愿景：让美丽的酒店遍布世界各地。

我们的使命：从设计到安装，高效全案解决全世界的住宅室内工程。

我们的价值观：361°打磨每一处细节，超“期望”交付。



BUSINESS & MANAGEMENT ORGANIZATION CHART

商业及管理架构图



TEAM ADVANTAGE

团队优势

OUR ADVANTAGE COMPARE TO OTHER COUNTRIES:

1. Innovation design team well known with lots of design awards.
2. High efficient design, fast execution, competitive design fee.
3. Design base on reality materials and product, optional with design elements.
4. Good and fast service, flexible working style, overseas services.
5. Integrate multiple interior design firm to meet with different customers' requirement.
6. We focus on new product & new craft R&D, integrate the whole supply chain for manufacturing, as well as abundant building materials resources. Our product types are diverse and the turnkey prices are more favorable.

设计及软装建材团队与其他国家团队相比的优势:

1. 设计团队业内知名度高，获多项殊荣。
2. 设计效率高，执行力强，性价比高。
3. 与建材，家具，软装产品无缝对接，所供应材料都是经过整体搭配，融合了设计元素。
4. 服务意识极强，灵活配合客户的需求，同时公司提供海外施工服务。
5. 整合中国其他室内设计公司的资源，快速专业为客户服务。
6. 自主工艺，产品研发，集合上下游供应链加工生产；同时坐拥丰富的建材资源。我们的产品类型多样，整合性价比更高。

CORE TEAM

核心团队



Zhu Shenwu 朱绳武
Chairman 董事长

Bachelor of Materials Science and Engineering, Central South University / Sun Yat-sen University MBA / Keelung College, Massachusetts Institute of Technology IMBA
中南大学材料科学与工程专业本科 / 中山大学 MBA / 美国麻省理工大学基隆学院 IMBA

Studying abroad since from 2007, back to China in 2017, step into international trade business, cross-border investment, interior design, building materials and construction industry. Start Thai real estate investment from 2014. He is leading company's steady development due to his solid English literacy, practical experience in international trade and cross-border investment business, and academic background in building materials and real estate finance.

2007 年在国外求学，2017 年回国以来，在中国从事国际贸易、跨境投资、室内设计、建筑材料与建筑业；2014 年开始投资泰国房地产行业。扎实的英语素养，国际贸易与跨境投资实战，建筑材料学和房地产金融学学术背景，多年国际贸易公司、室内设计与建筑材料进出口公司管理经验，国际化的房地产行业资源引领着公司稳步发展。

Li Shunnian 李顺年
General Manager 总经理

Graduated from Shenzhen University majoring in business administration / Certified Accountant / Senior Interior Furnishing Designer
毕业于深圳大学工商管理专业 / 执业会计师 / 高级软装设计师

Since from 2010, she has been engaged in interior furnishing industry. She used to be the head of China of Hotelier Group, who was the largest service provider of hospitality project in the Middle East. She Co-founded Foshan Difeng Furniture Co., Ltd. in 2015, in charge of company's overall operation. She led the team to successfully complete influential international projects such as Royal Tulip, Alexandier, Egypt / Lapita Hotel, Dubai / Mysk Al Mouj Hotel, Oman / Sheraton Resort, Fiji / Le Royal Meridien Hotel, Chennai, India / Couples of Holiday Inn, USA. With her professionalism and influence in the industry, she has continuously cultivated excellent teams for the company and won the top praise from all customers & partners.

自 2010 年开始投身工程室内软装行业。曾任中东地区最大的酒店工程材料服务商 Hotelier Group 中国区负责人。2015 联合创始佛山市帝丰家具有限公司，负责公司的整体运营工作。曾带领团队出色完成 Royal Tulip, Alexandier, Egypt • Kempinsky Hotel, Oman Sheraton Hotel Fiji • Le Royal Meridien Hotel, Chennai, India 等国际重大项目。凭着她的行业专业度和影响力，不断为企业培养出优秀的团队，并赢得所有客户的赞赏。

Michelle Zhuang 庄旋
Deputy General Manager 副总经理

Graduated from South China University of Technology majoring in architectural design and interior design / National registered interior designer
毕业于华南理工大学建筑设计与室内设计专业 / 国家注册室内设计师

He has been engaged in furniture design and production for 14 years. He has expert experience with various furniture structures and production processes. His solution on furniture project is always smart, professional and visible.

2006 年毕业至今，从事家具设计与生产 14 年，熟悉各类家具结构及生产工艺，能够快速专业的提供可视化设计方案并完美对接各种类型的家具项目。

DESIGN TEAM

设计团队



We respects the commonality of space and people, seek balance between human and nature, space and its usage, create a confluent aesthetic space.

我们尊重空间与人的共性，在人与自然、空间与效益的关系中寻找平衡，创造共生共融美学空间。

Under the premise of budget control, make sure each single item and atmosphere is collocated with each other. What we provide is not just the design, not just product, design into reality.

在成本可控的前提下，整体搭配设计、每一件硬装、软装及家具产品可以互相衔接。我们提供的不仅仅是设计，也不仅仅是产品，而是基于产品的设计、高度落地的设计。

FACTORY TOUR

厂房掠影



SCALE OF FACTORY 工厂规模

01 | HUANGSHAN FURNITURE FACTORY
50 Thousand SQM | 400 Workers

02 | FOSHAN FURNITURE FACTORY
60 Thousand SQM | 500
Workers

03 | SHANGHAI METAL FURNITURE FACTORY
Design Theme | Design Element | Design
Idea

04 | SHANGHAI GLASS PRODUCT FACTORY
4000SQM | 40 Workers

05 | HUANGSHAN FURNITURE SHOPPING MALL
45 Thousand SQM | 60 Staffs

06 | SHANGHAI HEAD OFFICE
200 SQM | 10 Staffs

01 | 黄山家具工厂
占地5万平方米 | 员工400
人

2. | 佛山家具工厂
占地6万平方 | 员工
500人

3. | 上海金属制品厂
占地2000平方 | 员工30人

4. | 上海玻璃制品厂
占地4000平方米 | 员工40
人

05 | 黄山家具卖场
占地4.5万平方米 | 员工60
人

06 | 上海办事处
200平方米 | 员工10
人

COMPANY HONOR

公司荣誉

Ecolabelling

编号: 2021-III-002-037

ISO14025 环境标志国际标准 III型环境标志证书

黄山奥菲家具有限公司

法人代表: 朱绳武

地址: 黄山经济开发区蓬莱路10号1幢

本证书证实该公司产品和活动生命周期信息公告, 依照 ISO 导则 82、ISO14062、ISO14040 系列国际标准验证, 符合 ISO14025 III型环境标志环境信息自我声明要求。

适用范围: 实木家具(桌、椅、床); 人造板家具(桌、柜、台、屏风工位); 钢木家具(课桌、课凳、床、椅); 金属家具(柜); 软体家具(沙发、床垫)

注册商标:  (第 4292088 号)

公告信息: 企业追求产品全生命周期的绿色环保, 依托自有专利实现可组装、可拆卸、实木类家具全部采用榫卯结构, 无钉子无螺丝, 融合人类工效学理念与简约便捷的设计风格, 实现质量、安全、健康、舒适、环保于一体。根据国家标准择优选择原材料, 提高板材利用率, 加工车间采用中央吸尘系统和移动吸尘系统相结合, 实现达标排放。产品主要环境指标优于国家标准(详见数据表)

检测机构: 安徽省产品质量监督检验研究院

颁证日期: 2021年7月26日

有效期至: 2023年7月25日

验证单位: 广州绿品知情认证有限公司
(III型环境标志商标许可方)

技术初审: 韩少杰

技术终审: 夏青



知识产权号: 27715345

鉴别III型环境标志证书真伪有效状态, 请扫描证书二维码进行查询。
公告网站: III型环境标志网www.cscses.com



中国环保产品认证证书

证书编号: CQC20703272040

申请人名称及地址: 黄山奥菲家具有限公司
黄山经济开发区蓬莱路10号1幢

品牌:

制造商名称及地址: 黄山奥菲家具有限公司
黄山经济开发区蓬莱路10号1幢

生产企业名称及地址: 黄山奥菲家具有限公司
安徽省黄山市黄山经济开发区蓬莱路10号

产品名称: 沙发

系列/规格/型号: 全皮沙发、皮沙发、人造革沙发、布艺沙发、布革沙发

认证模式: 产品检验+初始工厂检查+获证后监督

产品标准/技术要求: CQC5109-2018

上述产品符合 CQC51-381001-2018 认证规则的要求, 特此发证。

证书有效期: 2020年11月02日至2023年11月02日
证书有效期内本证书的有效性依据发证机构的定期监督获得保持。



主任: 陆楠



中国质量认证中心

http://www.cqc.com.cn

中国·北京·南四环西路188号9区 100070

电话: +86 10 83886666

Ecolabelling

黄山奥菲家具有限公司
III型环境标志公告信息数据表

指标	声明内容	备注	
设计	企业追求产品全生命周期的绿色环保, 依托自有专利实现可组装、可拆卸、实木类家具全部采用榫卯结构, 无钉子无螺丝, 融合人类工效学理念与简约便捷的设计风格, 实现质量、安全、健康、舒适、环保于一体。根据国家标准择优选择原材料, 提高板材利用率, 加工车间采用中央吸尘系统和移动吸尘系统相结合, 实现达标排放。	国家知识产权局颁发 20 项实用新型专利。	
	要求供应商按国家标准提供原辅材料, 并承担质量、环保连带责任, 其中:		
原材料	实木板、杉木床板	甲醛: 0.1 mg/L GB/T 3324-2017: ≤1.5 mg/L	
	免漆生态板(实木芯)	甲醛: 0.010 mg/m ³ GB/T 34722-2017: ≤0.124 mg/m ³	
	免漆生态板(多层芯)	甲醛: 0.011 mg/m ³ GB/T 34722-2017: ≤0.124 mg/m ³	
	饰面刨花板	甲醛: 0.012 mg/m ³ GB/T 15102-2017: ≤0.124 mg/m ³	
	多层板	甲醛: 0.054 mg/m ³ GB/T 9846-2015: ≤0.124 mg/m ³	
	水性油漆	游离甲醛: 23 mg/kg GB 24410-2009: ≤100 mg/kg	
		VOC: 66 g/L GB 24410-2009: ≤300 g/L	
	水性腻子	苯+甲苯+乙苯+二甲苯总和、重金属铅、镉、铬、汞、乙二酮及其酯类: 未检出	安徽省产品质量监督检验研究院出具合格检测报告。
		游离甲醛: 16 mg/kg GB 24410-2009: ≤100 mg/kg	
		VOC: 52 g/L GB 24410-2009: ≤300 g/L	
胶水	苯+甲苯+乙苯+二甲苯总和、重金属铅、镉、铬、汞、乙二酮及其酯类: 未检出		
	游离甲醛: 0.1 g/kg GB 18583-2008: ≤1.0 g/kg		
	苯、甲苯+二甲苯: 未检出		
生产阶段	企业推行清洁生产和无废少废工艺, 加工车间采用中央吸尘和移动吸尘系统相结合。废水、废气、噪声排放达标。	安徽威正测试技术有限公司出具合格检测报告。	
制成品	全部产品达国家质量标准要求, 主要产品甲醛释放量指标:		
	实木床、办公椅、会议椅	0.1 mg/L	
	定制柜、餐桌、办公桌、茶水柜	0.4 mg/L	
	主席台、书柜、会议室、班台	0.5 mg/L	
	会议桌	0.6 mg/L	
	课桌、课凳	0.5 mg/L	
	学生公寓床	0.030 mg/m ³ GB/T 3325-2017: ≤0.124 mg/m ³	
	屏风工位	0.016 mg/m ³ GB 18580-2017: ≤0.124 mg/m ³	
	礼堂椅	0.044 mg/m ³ GB/T 2602-2013: ≤0.120 mg/m ³	
	实木床、办公椅、会议椅、餐桌、办公桌、茶水柜、主席台、会议室、班台、会议桌、课桌、课凳、会议桌、课桌、课凳、会议桌、课桌、课凳	重金属铅、镉、铬、汞、乙二酮及其酯类: 未检出。	安徽省产品质量监督检验研究院出具合格检测报告。
管理	北京埃尔维质量认证中心颁发 ISO9001:2015 质量管理体系认证证书。 北京埃尔维质量认证中心颁发 ISO14001:2015 环境管理体系认证证书。 北京埃尔维质量认证中心颁发 ISO45001:2018 职业健康安全管理体系认证证书。		

本数据表与编号为 2021-III-002-037 的 ISO14025 环境标志国际标志 III 型环境标志证书同时使用方为有效。



知识产权号: 27715345

鉴别III型环境标志证书真伪有效状态, 请扫描证书二维码进行查询。
公告网站: III型环境标志网www.cscses.com

COMPANY HONOR

公司荣誉




环境管理体系认证证书

证书号: 036108ER4
兹证明
黄山奥菲家具有限公司
安徽省黄山市黄山经济开发区蓬莱路10号1幢
统一社会信用代码: 9134100078654595XU
建立的环境管理体系符合标准:
GB/T 24001-2016/ISO 14001:2015
认证范围
**家具的生产和销售
所涉及的环境管理活动**

上周期证书截止日期: 2021年5月23日
认证有效期: 2021年7月26日至2024年5月23日
生效日期: 2021年7月26日
(证书的有效性需经EWC通过定期的监督审核确认保持; 证书有效性信息请登录: <http://www.ewqcc.org>;
和国家认证认可监督管理委员会官方网站: <http://www.cnca.gov.cn> 进行查询; 本证书有效期至2022年5月)
序列号: YM069787

EWC 授权人: 




中国认可
国际互认
管理体系
MANAGEMENT SYSTEM
CNAS C039-M



北京埃尔维质量认证中心 北京市西城区车公庄大街甲4号

证书编号: AIITRE-00421IIIMS0194701



两化融合管理体系评定证书

Integration of Informationization and Industrialization Management System Certificate

兹证明
黄山奥菲家具有限公司

管理体系符合
《信息化和工业化融合管理体系 要求》(GB/T 23001-2017)

本证书对下述评定范围有效:

位于安徽省黄山市黄山经济开发区蓬莱路10号1幢的黄山奥菲家具有限公司, 与家具的产供销与财务协同管控能力建设相关的两化融合管理活动。

发证日期: 2021年03月29日
有效期至: 2024年03月29日
(本证书信息可在两化融合管理体系评定管理平台查询)

北京赛西科技发展有限公司 (盖章) 授权代表 (签字) 




体系评定
AIITRE A001-IIIMS



评定机构地址: 北京市东城区安定门东大街1号



绿色供应链评价证书

兹证明
黄山奥菲家具有限公司

获证组织统一社会信用代码: 9134100078654595XU
注册地址: 黄山经济开发区蓬莱路10号1幢
经营地址: 黄山经济开发区蓬莱路10号
其已通过本机构审核, 符合 AAC QT ST002 2020 绿色供应链认证要求, 评价结果:
五星级绿色供应链

认证范围:
家具设计、生产和销售所涉及的绿色供应链管理活动。

证书编号: 35521LSGYL10401
首次发证日期: 2021年04月01日
证书颁发日期: 2021年04月01日
证书有效期至: 2024年03月31日

证书签发人 





本证书由上海申西认证有限公司颁发, 获证组织应于证书有效日期前按规定执行监督审核, 证书到期前应及时申请更换证书, 认证资格是否有效可扫描或登录 www.ascen.cn 查询。证书信息亦可在国家认证认可监督管理委员会 (CNCA) 官方网站 (www.cnca.gov.cn) 上查询。

上海申西认证有限公司
地址: 中国·上海市松江区沪松公路1399弄68号12层

COMPANY HONOR

公司荣誉



中国环境标志产品认证证书
证书编号: CEC2019ELP04207361

委托人
黄山奥菲家具有限公司
地址: 安徽省黄山市黄山经济开发区蓬莱路10号1幢

生产者
黄山奥菲家具有限公司
地址: 安徽省黄山市黄山经济开发区蓬莱路10号1幢

生产企业
黄山奥菲家具有限公司
地址: 安徽省黄山市黄山经济开发区蓬莱路10号1幢

认证标准
中华人民共和国环境保护行业标准
HJ2547-2016《环境标志技术要求 家具》

认证单元
人造板类家具

产品名称、商标/品牌、型号
详见证书附件

上述产品符合中国环境标志产品认证实施规则 ECC-1031EL-A/0 的要求, 特发此证。
认证模式: 初始工厂检查+型式检验+获证后的监督
本证书的有效性依赖于获证机构的监督获得保持, 可通过扫描左下方二维码确认。

发证日期: 2022年1月21日
有效期至: 2026年1月21日
授权机构: 中华人民共和国生态环境部

签发人: [Signature]

中环联合(北京)认证中心有限公司
中国·北京·朝阳区育慧南路1号100029
http://www.meccec.com
本机构已通过全球环境标志国际合作体系(GENICES)评审



黄山奥菲家具有限公司
认证产品的商标、名称、型号规格表

序号	产品类别	产品名称	商标
1	木制台、桌类	办公桌(覆面)	第4292088号
2	木制台、桌类	办公桌(涂饰)	第4292088号
3	木制台、桌类	会议桌(覆面)	第4292088号
4	木质柜类	茶水柜(覆面)	第4292088号
5	木制台、桌类	茶几(涂饰)	第4292088号
6	木质柜类	书柜(覆面)	第4292088号
7	木质柜类	书柜(涂饰)	第4292088号
8	木制台、桌类	会议桌(涂饰)	第4292088号

此证书附件与编号为 CEC2019ELP04207361 的中国环境标志认证产品证书同时使用方为有效

签发人: [Signature]

中环联合(北京)认证中心有限公司
中国·北京·朝阳区育慧南路1号100029
http://www.meccec.com
本机构已通过全球环境标志国际合作体系(GENICES)评审



售后服务认证证书
★★★★★

证书编号: CIEC-20SC010006R0S-5

兹证明:
黄山奥菲家具有限公司
统一社会信用代码: 9134100078654595XU
经评价, 服务能力达到:
GB/T27922-2011《商品售后服务评价体系》
标准规定要求
证书覆盖范围:
办公家具(班台、办公沙发、办公椅、办公桌、会议椅、会议桌、屏风工位、书柜、铁质柜、主席台)、酒店家具(餐桌、茶水柜、床垫、定制柜、实木床)、民用家具、家居用品、学校家具(课凳、课桌、礼堂椅、学生公寓床)、医用家具的售后服务(五星级)

注册/经营/办公地址: 黄山经济开发区蓬莱路10号1幢

证书有效性以左侧二维码扫描内容为准
国家认监委证书查询网址: www.cnca.gov.cn
国检公信网查询: www.ciecbj.com

颁发日期: 2020年01月06日
换证日期: 2022年01月07日
有效期至: 2023年01月05日

[Signature]

国检公信(北京)检验认证有限公司
地址: 北京市朝阳区北苑东路19号院4号楼8层802室(100012)

COMPANY HONOR

公司荣誉



职业健康安全管理体系认证证书

证书号: 036108SR4
兹证明

黄山奥菲家具有限公司
安徽省黄山市黄山经济开发区蓬莱路10号1幢
统一社会信用代码: 9134100078654595XU

建立的职业健康安全管理体系符合标准:
GB/T 45001-2020/ISO 45001:2018

认证范围

家具的生产和销售
所涉及的职业健康安全管理活动

上周期证书截止日期: 2021年5月23日
认证有效期: 2021年7月26日至2024年5月23日
生效日期: 2021年7月26日

(证书的有效性需经EWC通过定期的监督审核确认保持; 证书有效性信息请登录: <http://www.ewqcc.org>;
和国家认证认可监督管理委员会官方网站: <http://www.cnca.gov.cn> 进行查询; 本证书有效期至2022年5月)
序列号: YM069786

EWC 授权人: 




中国认可
管理体系
MANAGEMENT SYSTEM
CNAS C039-M



北京埃尔德质量认证中心 北京市西城区车公庄大街甲4号



质量管理体系认证证书

证书号: 036108QR4
兹证明

黄山奥菲家具有限公司
安徽省黄山市黄山经济开发区蓬莱路10号1幢
统一社会信用代码: 9134100078654595XU

建立的质量管理体系符合标准:
GB/T 19001-2016/ISO 9001:2015

认证范围

家具的生产和销售

首次获证: 2008年8月5日 认证有效期: 2020年8月5日至2023年8月4日
换发日期: 2021年7月26日

(证书的有效性需经EWC通过定期的监督审核确认保持; 证书有效性信息请登录: <http://www.ewqcc.org>;
和国家认证认可监督管理委员会官方网站: <http://www.cnca.gov.cn> 进行查询; 本证书有效期至2022年8月)
序列号: YM069785

EWC 授权人: 




中国认可
国际互认
管理体系
MANAGEMENT SYSTEM
CNAS C039-M



北京埃尔德质量认证中心 北京市西城区车公庄大街甲4号



中国环保产品认证证书

证书编号: CQC20703272041

申请人名称及地址: 黄山奥菲家具有限公司
黄山经济开发区蓬莱路10号1幢

品 牌: 黄山奥菲家具有限公司

制造商名称及地址: 黄山奥菲家具有限公司
黄山经济开发区蓬莱路10号1幢

生产企业名称及地址: 黄山奥菲家具有限公司
安徽省黄山市黄山经济开发区蓬莱路10号

产 品 名 称: 金属办公家具(包括屏风)

系 列/规 格/型 号: 办公桌、洽谈桌、会议桌、会议条桌、培训桌、电脑桌、阅览桌、茶几、文件柜、档案柜、茶水柜、书架、屏风工位

认 证 模 式: 产品检验+初始工厂检查+获证后监督

产品标准/技术要求: CQC5109-2018

上述产品符合 CQC51-381001-2018 认证规则的要求, 特此发证。

证 书 有 效 期: 2020年11月02日至2023年11月02日
证书有效期内本证书的有效性依据发证机构的定期监督获得保持。

CQC  主任: 



中国质量认证中心

<http://www.cqc.com.cn> 中国·北京·南四环西路188号9区 100070 电话: +86 10 83886666

COMPANY HONOR

公司荣誉



中国环保产品认证证书

证书编号: CQC20703272044

申请人名称及地址: 黄山奥菲家具有限公司
黄山经济开发区蓬莱路10号1幢

品牌:

制造商名称及地址: 黄山奥菲家具有限公司
黄山经济开发区蓬莱路10号1幢

生产企业名称及地址: 黄山奥菲家具有限公司
安徽省黄山市黄山经济开发区蓬莱路10号

产品名称: 木制办公家具

系列/规格/型号: 班台、主席台、演讲台、讲台、接待台、审判台、操作台、填单台、咨询台、服务台、吧台、办公桌、洽谈桌、会议桌、会议桌、培训桌、电脑桌、阅览桌、写字桌、书桌、职员桌、审判桌、书记员桌、当事人桌、茶几、圆几、方几、文件柜、档案柜、资料柜、活动柜、书柜、茶水柜、储物柜、电视柜、床头柜、衣柜、矮柜、鞋柜、现金柜、非现金柜、期刊柜、展示柜、床、书架、期刊架、行李架、衣帽架、办公椅、会议椅、实木椅、圆椅

认证模式: 产品检验+初始工厂检查+获证后监督

产品标准/技术要求: CQC5109-2018

上述产品符合 CQC51-381001-2018 认证规则的要求, 特此发证。

证书有效期: 2020年11月02日至2023年11月02日

证书有效期内本证书的有效性依据发证机构的定期监督获得保持。



主任: 陆楠



中国质量认证中心

http://www.cqc.com.cn

中国·北京·南四环西路188号9区 100070

电话: +86 10 83886666



自愿性产品认证证书

认证项目: 家具中有害物质限量认证

申请人名称及地址: 黄山奥菲家具有限公司

注册地址: 黄山经济开发区蓬莱路10号1幢

制造商名称及地址: 黄山奥菲家具有限公司

生产地址: 黄山经济开发区蓬莱路10号1幢

生产厂名称和地址: 黄山奥菲家具有限公司

生产地址: 黄山经济开发区蓬莱路10号

产品认证单元: 木质家具; 金属家具; 软体家具。

规格名称: 产品具体规格型号见附件

认证模式: 初始工厂检查+产品检测+获证后监督

产品标准和技术要求: GB/T 35607-2017《绿色产品评价 家具》品质属性中产品有害物质限量及《家具有害物质限量认证实施规则》要求

证书编号: 35521JJYHWZ10403

首次发证日期: 2021年04月08日

证书颁发日期: 2021年04月08日

证书有效期至: 2024年04月07日



证书签发人



本证书由上海申西认证有限公司颁发, 获证组织应于证书有效日期前按规定执行监督审核, 证书到期前应及时申请更换证书, 认证资格是否有效可扫描或登录 www.ascn.cn 查询。证书信息亦可在国家认证认可监督管理委员会 (CNCA) 官方网站 (www.cnca.gov.cn) 上查询。

上海申西认证有限公司

地址: 中国·上海市松江区沪松公路1399弄68号12层



自愿性产品认证证书 附件

获证组织: 黄山奥菲家具有限公司

证书编号: 35521JJYHWZ10403

证书包含的子证书如下:

序号	产品单元	产品类别	产品名称
01	木质家具	桌类	办公桌
02	木质家具	椅凳类	办公椅
03	木质家具	柜架类	文件柜
04	金属家具	椅凳类	会议椅
05	金属家具	桌类	会议桌
06	软体家具	沙发	沙发

(完)



上海申西认证有限公司

地址: 中国·上海市松江区沪松公路1399弄68号12层

SCOPE OF SERVICE

服务范围

01 | PROJECT POSITIONING

Brand Image | Project Advantage
Customer Analysis

02 | PROJECT PROGRAMMING

Function Area | Direction
Flow

03 | CONCEPT DESIGNING

Design Theme | Design Element | Design
Idea

04 | INTERIOR DESIGNING

Prospective Design | Implement Drawing
| Section Details | Quantity Survey |
Product Specification | Material Pick Up

05 | INTERIOR GUIDELINE DESIGNING

Guideline System | Signage Image

06 | PROJECT SUPPLY / VENDOR RECOMMENDATION

Fit out | FF&E | OS&E

07 | BUDGET ANALYSIS

Budget Control | Value
Engineering

08 | LOCAL SERVICE

Site Installation | Project Supervision | Site
Display

1. | 项目定位

品牌形象 | 项目优势 | 目标客
群

2. | 项目规划

功能区域 | 动线规划

03 | 概念设计

设计主题 | 设计元素 | 设计构
思

04 | 室内设计

效果图设计 | 施工图设计 | 细节剖析 | 统计
产品清单 | 产品规格书 | 挑选物料

05 | 室内导向设计

导视系统 | 标牌形
象

06 | 项目物料供应 / 推荐供应商

硬装 | 软装 | 运营消耗品

07 | 预算分析

预算控制 | 成本优
先

08 | 本地服务

现场安装 | 项目监理 | 现场陈
设

SERVICE PROCESS INTRODUCTION

服务流程介绍

01

PRELIMINARY PLANNING 前期规划



The designer meets with the owner to review project location, investigate the market situation and competitors' operating status. Plan on hotel guestroom & public area's layout according to local cultural and operator's requirements, as well as the hotel style and space usage.

设计师与业主开会，审查项目现场方位，勘察项目地市场情况，调查竞争对手的经营现状。结合当地人文环境与经营者的要求，协调酒店的风格和空间规划，根据建筑平面图制定客房与公共区域的布局。

02

DESIGN 设计



Turn ideas into reality. One to one professional customization service, directly communicate with design team. Decide on the overall design concept, develop and improve on each detail, produce sample, construction drawings and bill of quantity.

把理念变成现实。一对一专业定制需求，直接对接合作设计团队，确定总体概念设计，进一步发展和完善细节，制作产品样本、施工图和生产清单。

03

COST-EFFECTIVENESS 成本效益



Professional estimation team offers cost-effective budget, apply the most suitable material for the design on budget.

专业团队提供高性价比工程造价、空间效益造价。合理规划设计用料，提高成本效益，节省开支。

04

BIDDING & CONTRACT SIGNING 投标与合同签订



According to the final determination of customer's needs, design details, project budget, production schedule etc. to generate a quotation. The contract will be drafted in accordance with international quality assurance standards.

根据最终确定的客户需求、设计细节、项目预算、生产时间等综合来制定报价。合同按照国际认证和质量保证标准进行起草。

05

PROJECT MANAGEMENT 项目管理



Through serious project management and team working, achieve successful project on budget without disturbing our customer.

致力于为客户省时、省心、省钱、高效完成项目。严密有序的项目管理和团队合作，诚信服务，值得放心选择。

06

PRODUCTION DRAWINGS 制作图纸



Realize your design ideas. We produce accurate drawings and specification files for all FF& E product, and SOE, make sure every detail and material are accurate.

实现你的设计想法。我们将为 FF & E 和 SOE 制作精确的图纸和规范文件，每一个细节和用料都精细无误。

SERVICE PROCESS INTRODUCTION

服务流程介绍

07

FURNITURE PRODUCTION 家具生产



Manufacture a variety of customized furniture efficiently at high-quality standard. Carry out strict inspection comprehensive & mature supplier management.

高效高质生产制造生产各种定制家具。严密把关，全方位检测。提供成熟的供应商管理服务。

08

MATERIALS PROCUREMENT 物料采购



A global supply network over high quality materials selection.

拥有合作多年的全球供应网络，不同渠道精细优选，采购优质的材料。层层筛选，质量把关。

09

QUALITY CONTROL 质量控制



Equipped with experienced inspection team to strictly control all aspects of the production stage, test and check samples frequently to ensure on time delivery & feedback.

配备质检团队严格把关生产阶段中的各个环节，反复测试、检验样品以确保每件产品都按质按时完成，并进行实时检验反馈。

10

TRANSPORTATION & INSTALLATION 运输和安装

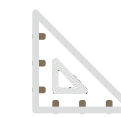


Each product is tightly packed in 4 layers in accordance with international standards, and cooperates with superior logistics service providers to ensure the products safety arrival. Provide installation manual, construction supervision and installation services.

每一件产品都按照国际规范标准 4 层严密包装，合作优质物流商网络，以确保产品无损的进入现场。保障运输质量无破损。提供客安装计划调度，施工监理及施工服务。

11

PERSONALIZED SERVICE 个性化服务



One to one service, ins communication. Provide one-stop solution on design and supply services.

全过程一对一项目对接，实时沟通。为你提供提供一站式设计装饰整体工程服务和五星高品质示范服务。

12

AFTER SALES SERVICE 售后服务



After the project is over, we provide a full range of after-sales maintenance services to ensure Progress at site move smoothly. Guarantee on good quality to establish long-term cooperation ship and good reputation.

项目结束后，提供全方位的售后保养服务，确保后续项目进展顺利。保障质量品质，建立长远的合作和良好的口碑。



Representative Cases List
历年经典案例清单

Turnkey Hotel Cases
交钥匙酒店案例

Design Cases
设计案例



REPRESENTATIVE CASES LIST

历年经典案例清单

REPRESENTATIVE PROJECTS OVER 10 YEARS

历年经典项目

	2021.05	2020.12	2020.06	2019.12	2019.11	2019.11	2019.11	2019.11
PROJECT NAME	Radisson Hotel	Hotel Residency	Avinash International Hotel	Hawthorn Suites	MVV City Hotel	Lemon Tree Premium	Lemon Tree Premium	A77 Hotel
PROJECT LOCATION	Riyadh, KSA	India	Jagadapur, India	Dwarka, India	India, Raipur	India, Vishakapatnam	India, Vijayawada	Foshan, China
PROJECT SCOPE	Interior design, fixed & loose furniture, lighting, wall-paper, carpet, curtain, artwork & sculture	Fixed & Loose furniture	Fixed & Loose furniture, curtain	Decorative Light	Fixed & Loose furniture, Lighting, Carpet, Curtain	Fixed & Loose furniture, Lighting, Carpet, Curtain	Fixed & Loose furniture, Lighting, Carpet, Curtain	loose furniture, lighting, carpet, curtain, artwork
	2019.10	2019.08	2019.04	2019.03	2019.02	2019.01	2018.12	2018.10
PROJECT NAME	Guesthouse Hera Apartment	Holiday Inn.	Nakanda Hotel	Palm Pallagio	JR Hotel	P247	Howard Johnson Hotel	Staybridge Hotel
PROJECT LOCATION	Jeddah, KSA	Lima, Peru	India	Raipur, India	India	Dubai	U.S.A	U.S.A
PROJECT SCOPE	Fixed & Loose furniture, Carpet, Lighting	Loose Furniture	Fixed & Loose furniture	Interior design, fixed & loose furniture, lighting, wall-paper, carpet, curtain, artwork & sculture	Fixed & Loose furniture	Loose Furniture	Fixed & loose furniture, lighting, artwork	Fixed & loose furniture, lighting, artwork

REPRESENTATIVE PROJECTS OVER 10 YEARS

历年经典项目

	2018.10	2018.09	2018.08	2018.06	2018.05	2018.05	2018.05	2018.04
PROJECT NAME	Jintai Hotel	Holiday Inn Festival City Hotel	Fantasy Villa	Norbu Hotel	Millinnium Hotel	Copthorne Hotel	4 Point by Sheraton	Days Inn.
PROJECT LOCATION	Yunnan, China	Dubai	Fiji	India	Mekkah, KSA	Mekkah, KSA	Mekkah, KSA	U.S.A
PROJECT SCOPE	Interior design, fixed & loose furniture, lighting, wall-paper, carpet, curtain, artwork & sculture	Loose Furniture	Interior design, fixed & loose furniture, lighting, wall-paper, carpet, curtain, artwork & sculture	Fixed & Loose furniture	Decorative Light	Decorative Light	Decorative Light	Fixed & Loose furniture
	2018.02	2017.12	2017.12	2017.11	2017.04	2017.03	2017.01	2016.12
PROJECT NAME	Holiday Inn. Express	Ansansal hotel	Holiday Inn.	Novotel Chennai Hotel	Mysk Al Mouj Hotel	Paramount (Damac tower)	Golden Wall Hotel	Meridian Bay Hotel (Second Phase)
PROJECT LOCATION	U.S.A	India	Dubai	India Chennai	Musca, Oman	Dubai	Jerusalem, Isreal	India ,Kundapur
PROJECT SCOPE	Fixed & Loose furniture	Fixed & Loose furniture	Loose Furniture	Room Furniture, Public Area Furniture, Restaurant Furniture	Loose Furniture	Loose Furniture	Fixed & Loose furniture	Room Furniture

REPRESENTATIVE PROJECTS OVER 10 YEARS

历年经典项目

	2016.12	2016.10	2016.08	2016.04	2016.01	2015.11	2015.10	2015.09
PROJECT NAME	Marriot Courtyard	Lapita Hotel	Marcian Hotel	TOKORIKI ISLAND SHERATON	Coral Hotel Jeddah	Novotel Calcutta Hotel	Best Westein Maple Leaf Hotel	Paradise Hotel
PROJECT LOCATION	Bangladesh, Dhaka	Dubai	Philippine	FIJI, TOKORIKI ISLAND	KSA, Jeddah	India, Calcutta	Bangladesh, Dhaka	KSA, Dammam
PROJECT SCOPE	Room Fixed furniture, Public Area Furniture, Restaurant Furniture	Loose Furniture	Joinery, FF&E	fixed & loose furniture, lighting, wall-paper, carpet, curtain, artwork & sculture	fixed & loose furniture, lighting, wall-paper, carpet, curtain, artwork & sculture	Joinery, FF&E	Room Furniture, Public Area Furniture, Restaurant Furniture	Room Furniture & Public Area Furniture
	2015.06	2015.04	2015.04	2014.10	2014.09	2014.09	2014.05	2014.02
PROJECT NAME	Meridian Bay Hotel	Le Meridien Hotel	The Deer Resort&Villa	Le Royal Meridien Chennai Hotel	Amari Dhaka Hotel	Radisson Blu View Hotel	Orange Hotel	Al Shahbaa Hotel
PROJECT LOCATION	India, Bangalore	Bangladesh, Dhaka	Thailand, Chiangmai	India Chennai	Bangladesh, Dhaka	Bangladesh, Chittagong	India, Calcutta	KSA, Jeddah
PROJECT SCOPE	Room Furniture	Part of Room Furniture, Public Area Furniture, Restaurant Furniture	Joinery, FF&E, OS&E, Flooring, Tiles	Room Furniture	Room Furniture, Public Area Furniture, Restaurant Furniture	Room Loose and Fixed Furniture	Room Furniture, Public Area Furniture, Restaurant Furniture	FF&E

REPRESENTATIVE PROJECTS OVER 10 YEARS

历年经典项目

	2013.11	2013.09	2013.08	2013.05	2012.10	2012.07	2012.06	2012.04
PROJECT NAME	Palmiye Hotel	Vingroup Phu Quoc Hotel	Westin Hotel	Lemon Tree Hotel	Park Hayyat Hotel	Country Inn and Resort	Fushion Hotel	Country Inn and Resort
PROJECT LOCATION	Turkey, Istanbul	VIETNAM Phu Quoc ISLAND	India, Trivandrum	India, Chennai	India, Chennai	India, Pune	India, Bangalore	India, Myore
PROJECT SCOPE	Room Fixed & Loose Furnitruue	Room Furniture, Public Area Furniture, Restaurant Furniture, Bar Furniture	Room Furniture, Public Area Furniture	Room Furniture, Public Area Furniture, Restaurant Furniture	Room Furniture, Public Area Furniture	Room Furniture, Public Area Furniture, Restaurant Furniture	Room Furniture, Public Area Furniture, Restaurant Furniture	Room Furniture, Public Area Furniture, Restaurant Furniture
	2012.04	2012.01	2011.12	2011.09	2011.07	2011.05	2011.02	2010.09
PROJECT NAME	Wonderla Hotel in Children Park	Grand Hyatt Goa	Country Inn and Resort Project	ROC Hotel	Villa Asoke Condo	Aetas Lumpini Hotel	Hilton Hotel	IBIS BRISBANE HOTEL
PROJECT LOCATION	India, Bangalore	India, Goa	India, Mysore	India, Bangalore	Thailand, Bangkok	Thailand, Bangkok	India, Hyderbad	AUSTRILIA, BRISBANE
PROJECT SCOPE	Room Furniture, Public Area Furniture, Restaurant Furniture	Part of Room Furniture, Public Area Furniture, Restaurant Furniture, Outdoor Furniture	Room Furniture, Public Area Furniture, Restaurant Furniture	Room Furniture, Public Area Furniture, Restaurant Furniture, Lighting.	Room Fixe furniture and Part of Loose furniture	Room Furniture	Room Furniture & Restaurant Furniture	Room Furniture



TURNKEY HOTEL CASES

交钥匙酒店案例



Challenge: All material & all furniture have to be customized and applied with the design element.

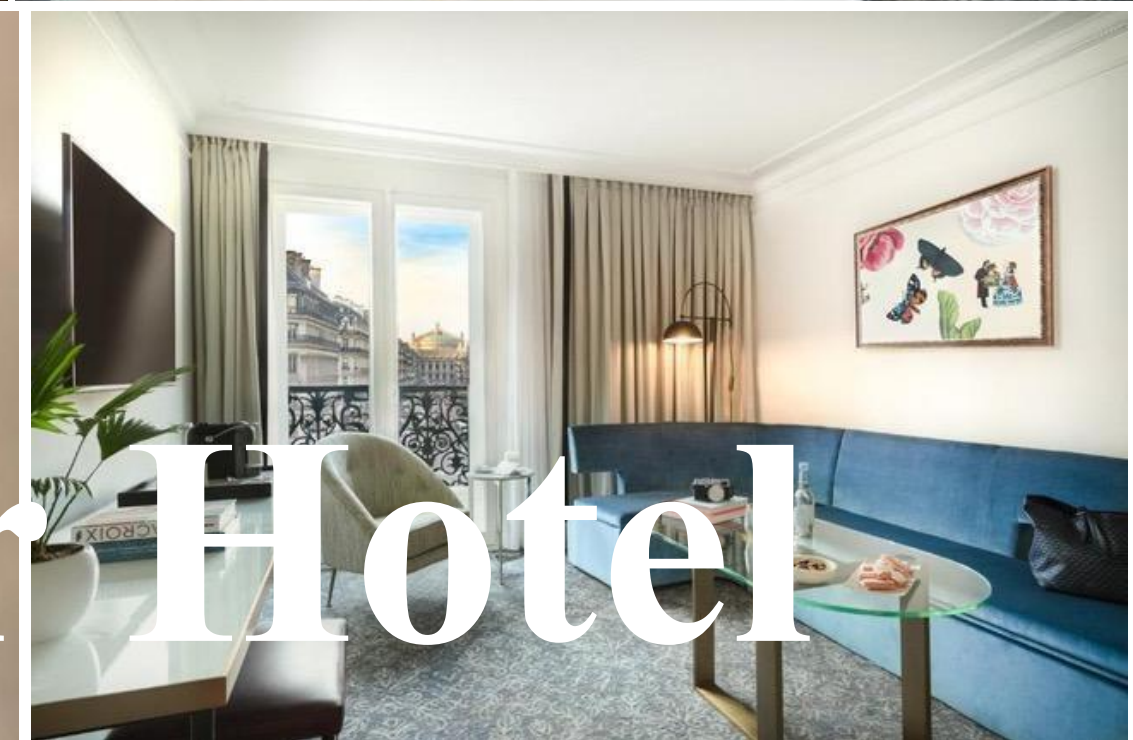
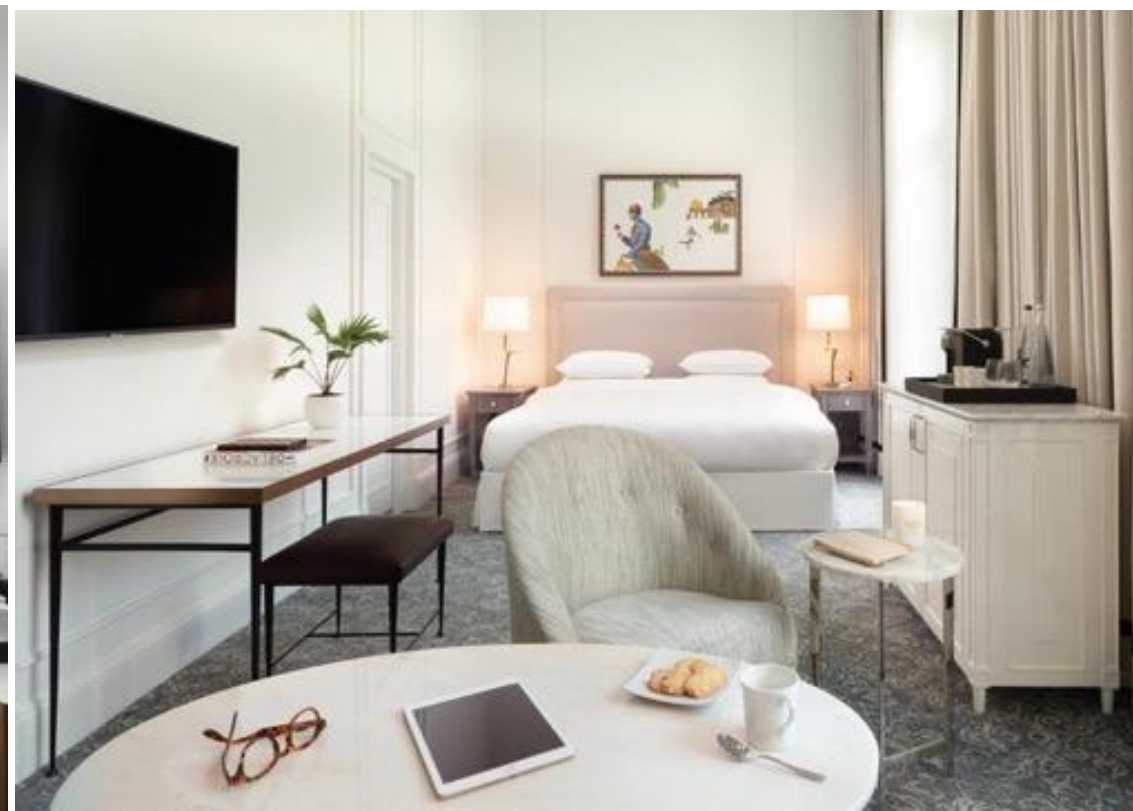
Location: Dhaka, Bangladesh

Time Frame: 90 Days Complete

Period: 2018

Scope of Work: Joinery & loose furniture





Do Louver Hotel



All-Day-Dining



Challenge on all material & all furniture have to be customized and applied with the design element.

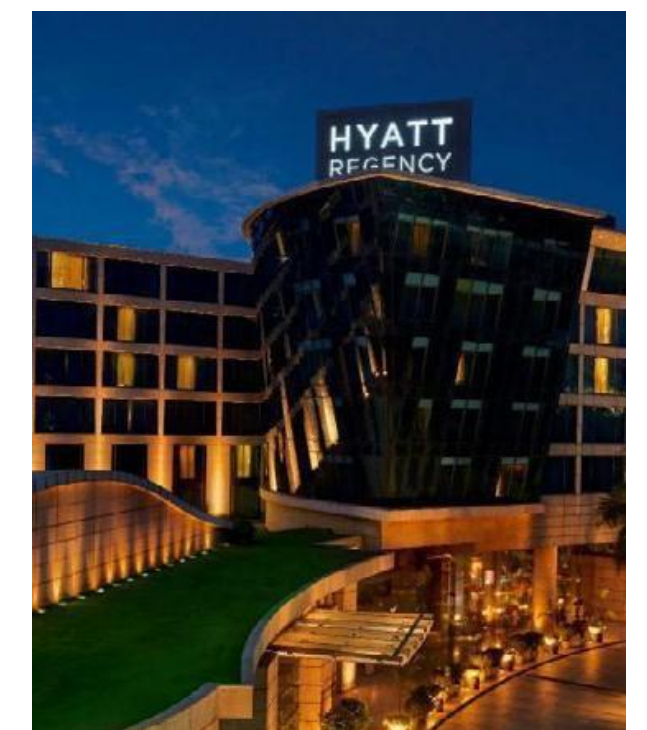
Hyatt Regency

Hotel

02

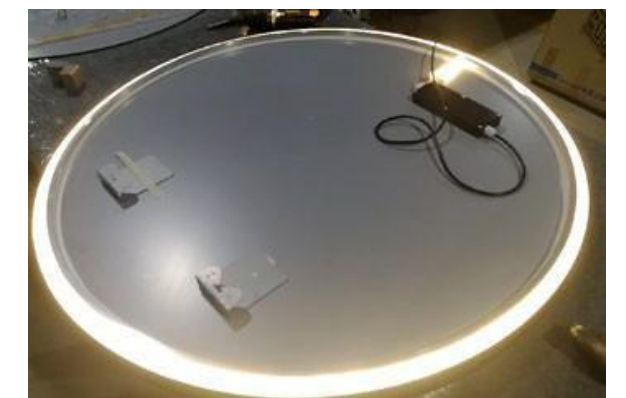


Challenge: Furniture is designed into very details, specially hide all the LED light, transformer and connection among multiple material. Maintain the smart & clean.
Location: Mumbai, India
Time Frame: 60 Days
Complete Period: 2018
Scope of Work: Furniture, Lighting, Artwork, Flooring, Wallcovering, Curtain for guestroom & public area





Hyatt Regency Hotel



Furniture is designed into very details, specially hide all the LED light, transformer and connection among multiple material. Maintain the smart & clean.

Hyatt Regency Hotel



Furniture is designed into very details, specially hide all the LED light, transformer and connection among multiple material. Maintain the smart & clean.

Mysk Al Mouj Hotel 03

mysk
by SHAZA

Challenge: Precise details are followed, even the smallest discrepancy is not acceptable. All veneer should be jointed naturally in horizontal & vertical.

Location: Muscat, Oman

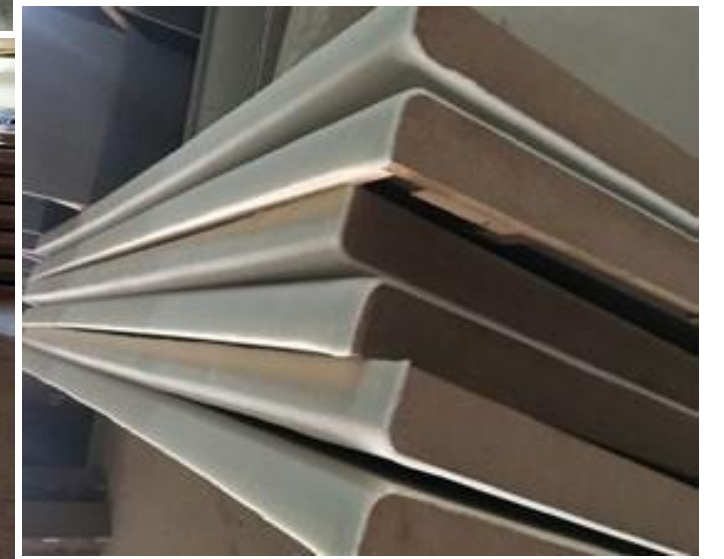
Time Frame: 60 Days

Complete Period: 2017

Scope of Work: Loose Furniture







Production Site



FR foam & fabric is fully applied on all upholstery items.

Clean & dry solid wood, even internal wood is fully polished.

All metal bases are treated with non-finger printed oil, individual parts are wrapped very well in 3 layers.

All case goods are made with MR MDF with solid wood lipping, veneer grain is aligned, contains triple working hours than normal process.

Novotel Hotel

04


NOVOTEL
HOTELS, SUITES & RESORTS

Challenge: Client's preferred veneer color is special and unique, we have changed several painting formula to meet the requirement.

Location: Chennai, India

Time Frame: 60 Days

Complete Period: 2016

Scope of Work: Loose & fixed furniture





Novotel Hotel

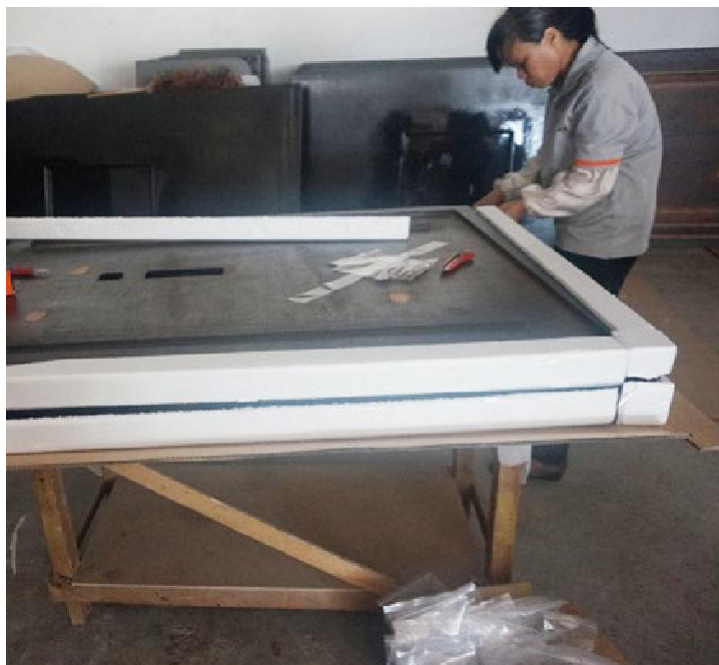


Client's preferred veneer color is special and unique, we have changed several painting formula to meet the requirement.



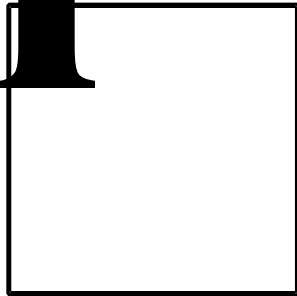


Production & Site





Radisson Hotel

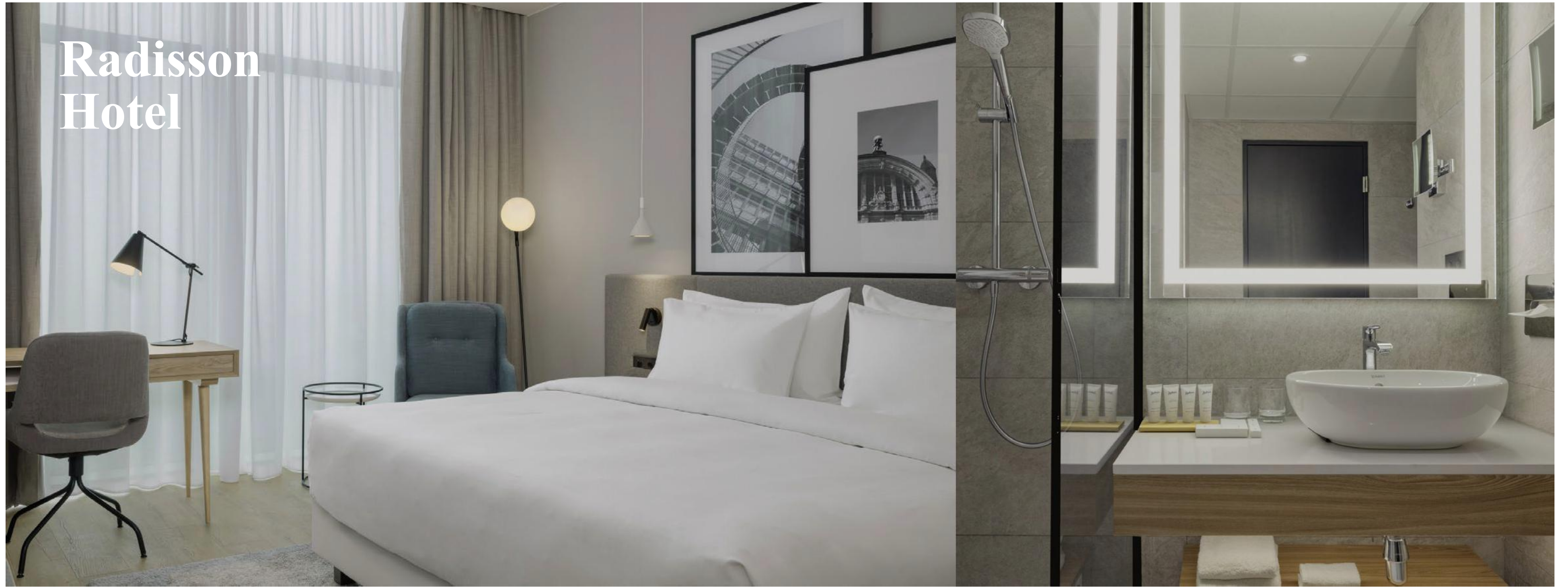


05

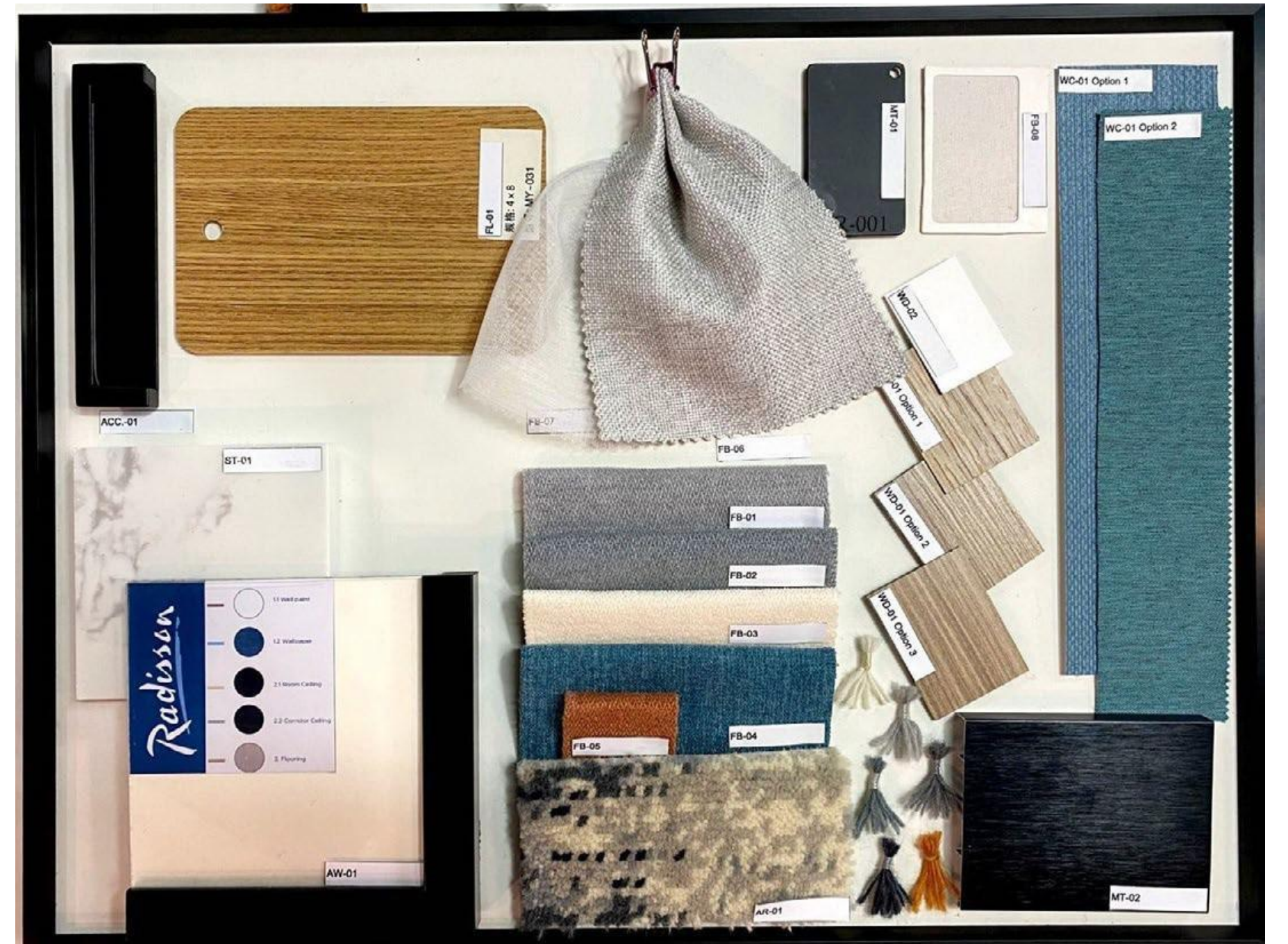
Project Feature, Customer awarded us this entire project (500 bedroom + 3 floors public area) from design to supply during Covid-19 circumstance. We never get chance to meetface to face. Our sincere service & professional advice drives our cooperation. We become the most familiar stranger to each other now.
Location, Riyadh, KSA
Project Scale, 420 typical studios, 20 double studios, 20 duplex, 11 villas & and 1service building with 3 floors.
Time Frame, 60 Days
Complete Period, 2021
Scope of Work, Interior design and supply loose & fixed furniture, lighting, artwork, carpet, wallcovering and curtain for all interior area.



Radisson Hotel



Customer awarded us this entire project (500 bedroom + 3 floors public area) from design to supply during Covid-19 circumstance. We never get chance to meet face to face. Our sincere service & professional advice drives our cooperation. We become the most familiar stranger to each other now.



Production Site

Mercure Hotel 06



Project Feature, 5 mock up rooms supplied by others were all rejected before we were awarded this project.

Location, Riyadh, KSA

Project Scale, 128 bedrooms

Complete Period, Ongoing since 2021

Scope of Work, Fixed & loose bedroom furniture



Quality Inspection

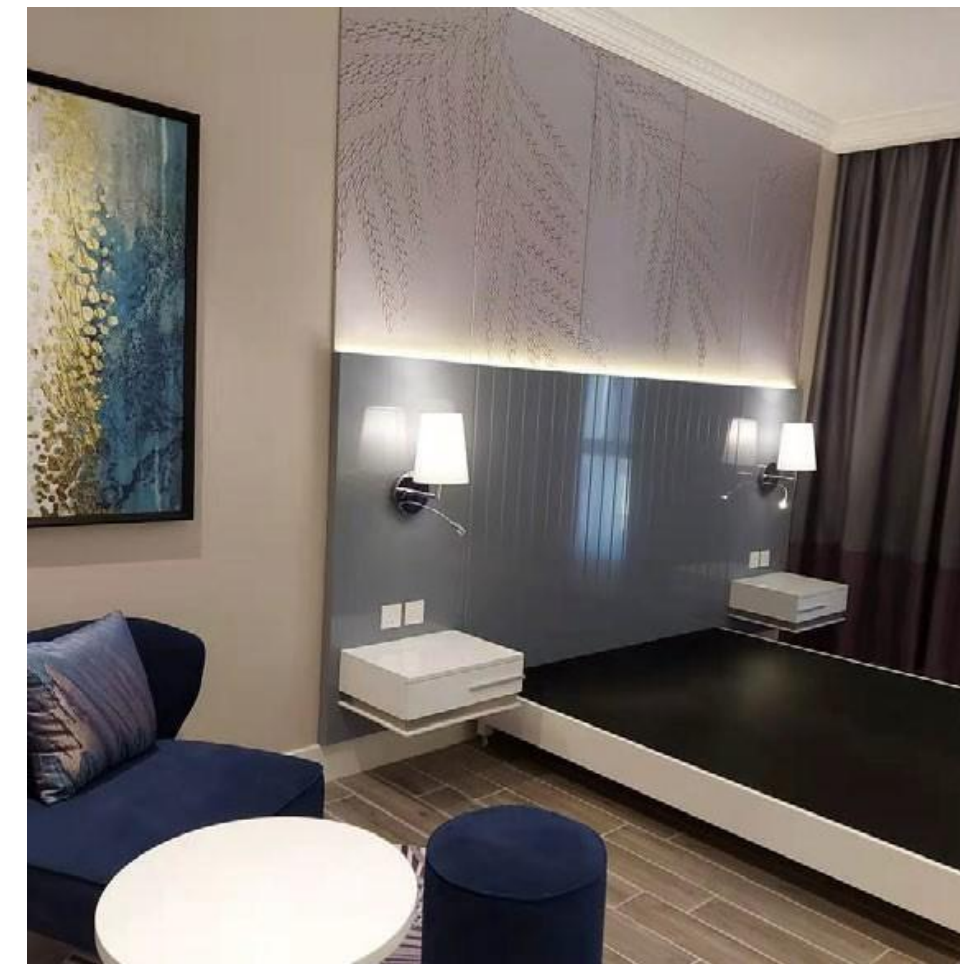


Strict and Complete Quality Control System.
Is Life, Is Creativity.

Poetic Light and Shadow Integrated into Nature.
The ultimate living solution that perfectly balances aesthetic and functionality.



Aesthetical Harmony in Every Detail. Just the Right Geometric Beauty.
Minimalist Art.





Sheraton Hotel & Resort



Challenge: All the indoor furniture and lighting was developed based on designer's sketch. But we still finished thousands of product within 2 months from product development till mass production.

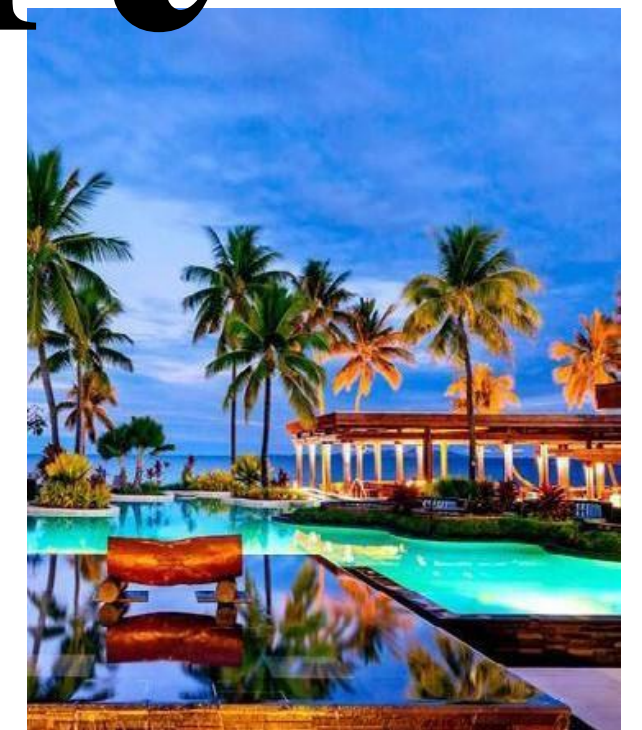
Location: Tokoriki Island, Fiji

Project Scale: 420 typical studios, 20 double studios, 20 duplex, 11 villas & and 1 service building with 3 floors.

Time Frame: 60 Days

Complete Period: 2016

Scope of Work: Fixed & Loose Furniture, lighting, artwork for guestroom & public area.





Artistic Sense with Full Personality

Sheraton Hotel

Natural Materials & Warm Earth-Tones
& Dynamic Spatiality.



Poetic Aesthetics Derived from Nature





Olayiya Hosta Service Apartment

08

Project Feature, 100% satisfied project
Location, KSA
Project Scale, 50 bedrooms
Time Frame, 45 Days
Complete Period, 2021
Scope of Work, Loose Furniture & artwork for guestroom



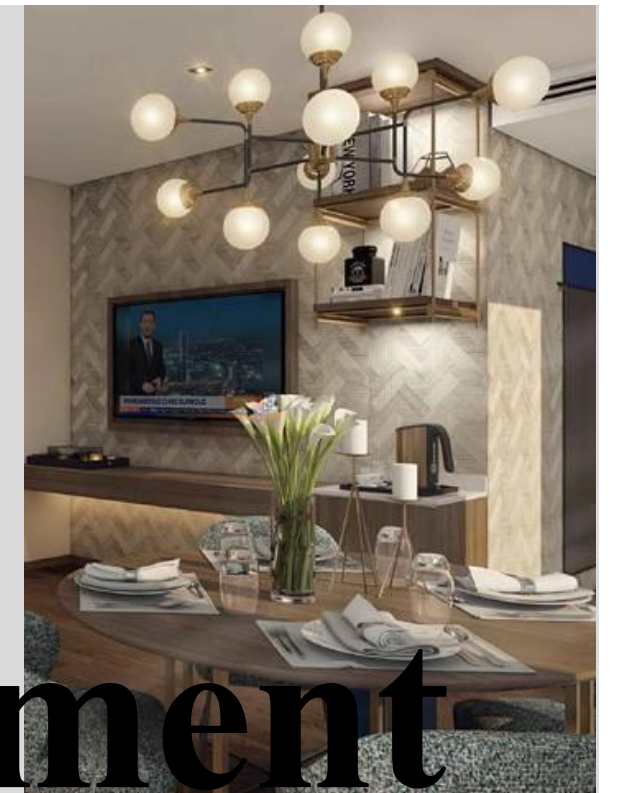


Just the Right Geometric Beauty.
Extraordinary Creativity Lights Up a Dream
Room.

Create a Model of Luxury and
Elegance with Ingenious Craftsmanship.

The ultimate living solution th
at perfectly balances aesthetic
and functionality.

Olaiya Hosta Service apartment



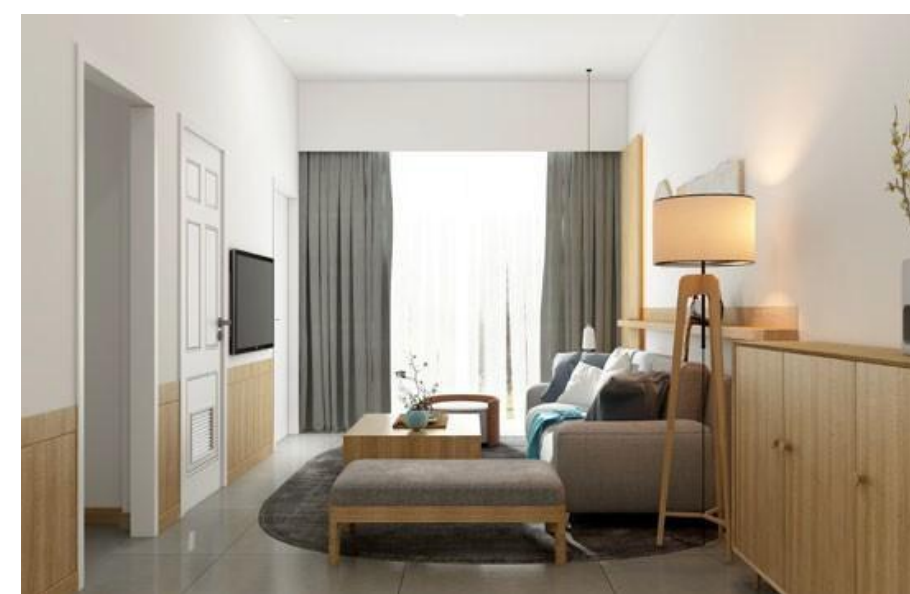
Production Site





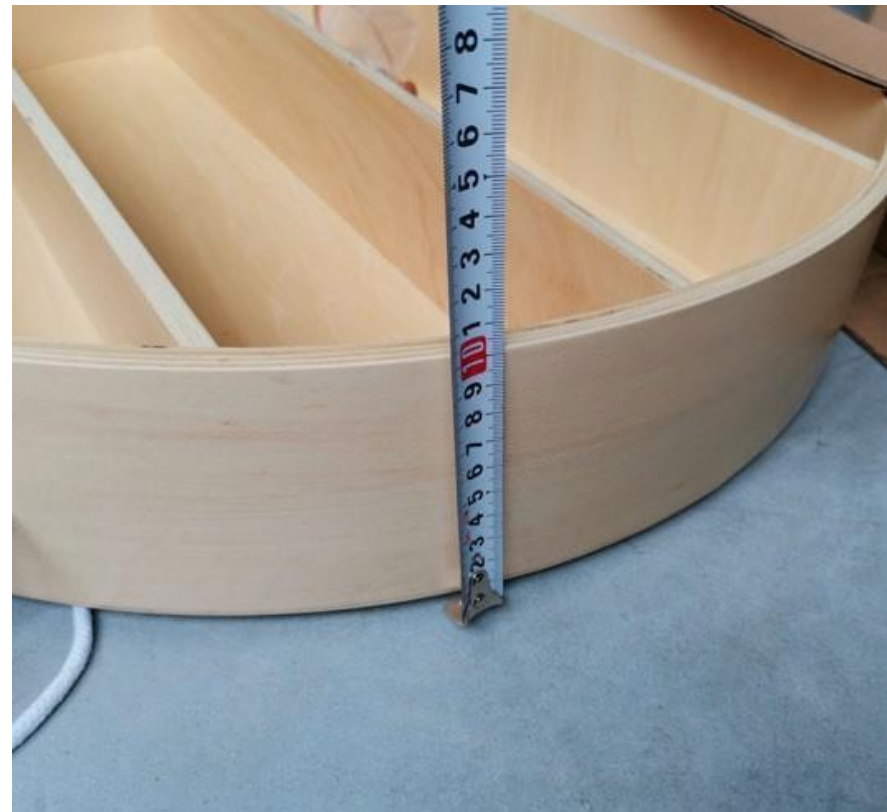
UTT Service Apartment 09

09



Challenge: Beach side service apartment, from design to supply, we achieve budget control in good quality, all material must be moisture resistant.
Location: Phuket, Thailand
Project Scale: 300 keys
Time Frame: 90 Days
Complete Period: 2021
Scope of Work: Interior design and supply loose & fixed furniture, lighting, carpet, artwork, wallcovering and for all curtain interior area.





Quality Inspection

Ingenious Work Shows British Elegance

Natural Materials & Warm Earth-Tones
& Dynamic Spatiality





DESIGN CASES

设计案例



Radisson

Hotel 01

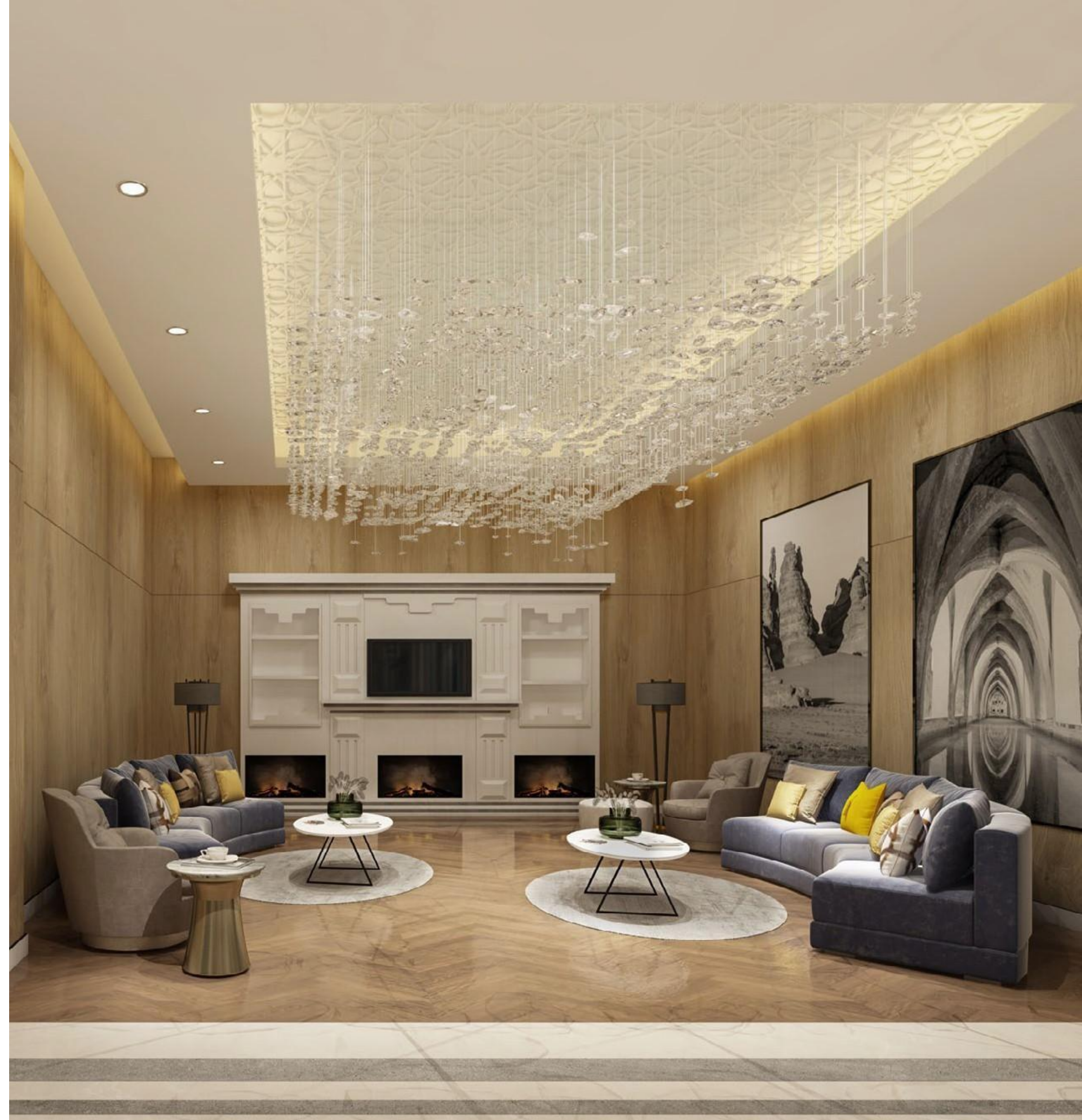




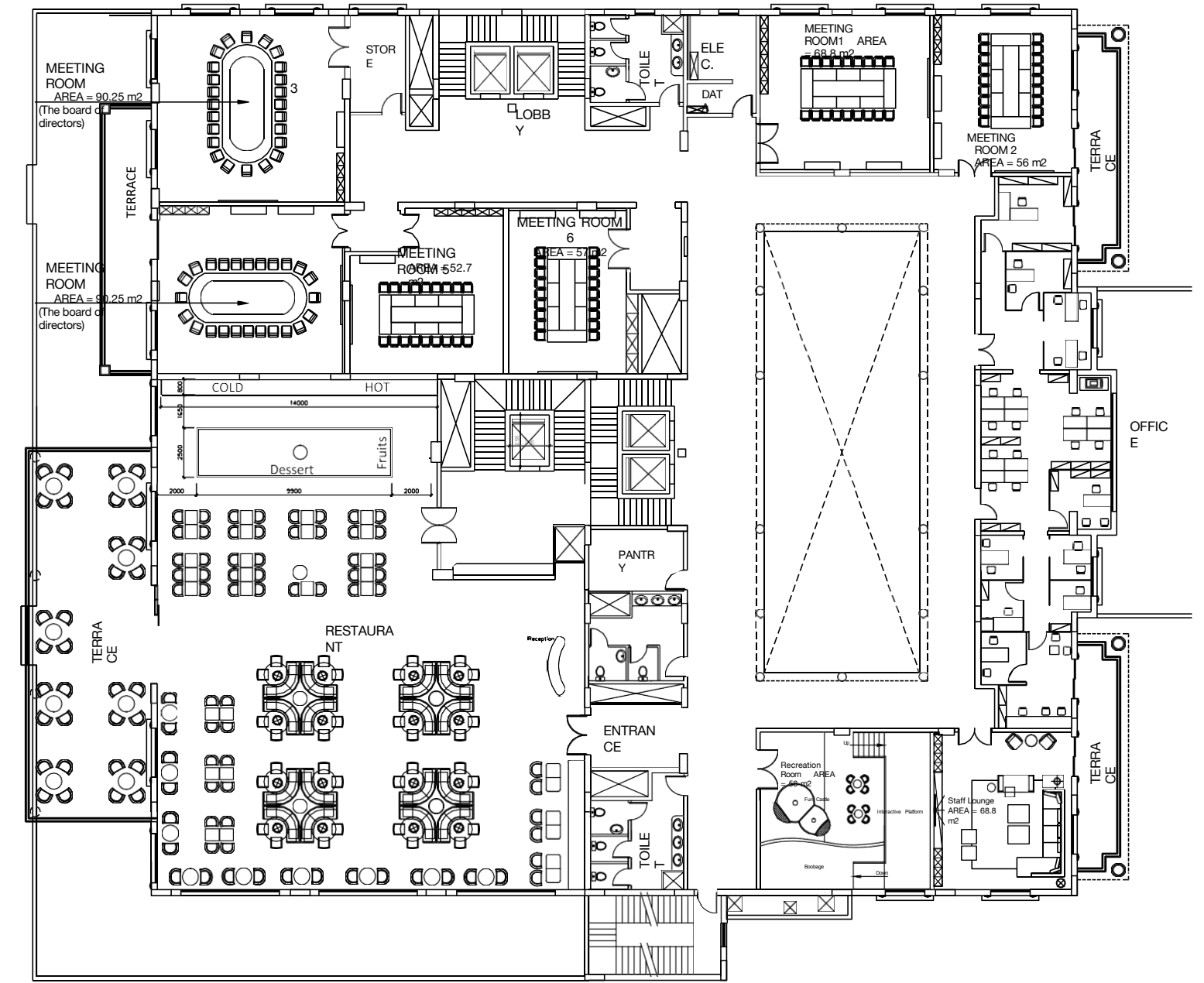
Reception Lobby



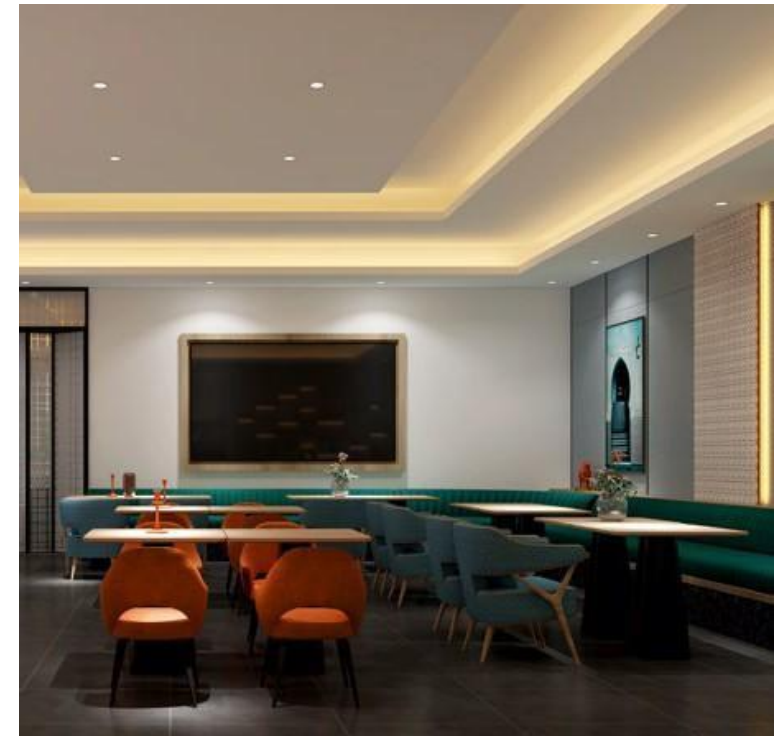
Poetic Aesthetics Derived from Nature.
Rare Interesting Creativity. Unique Elegant Art.



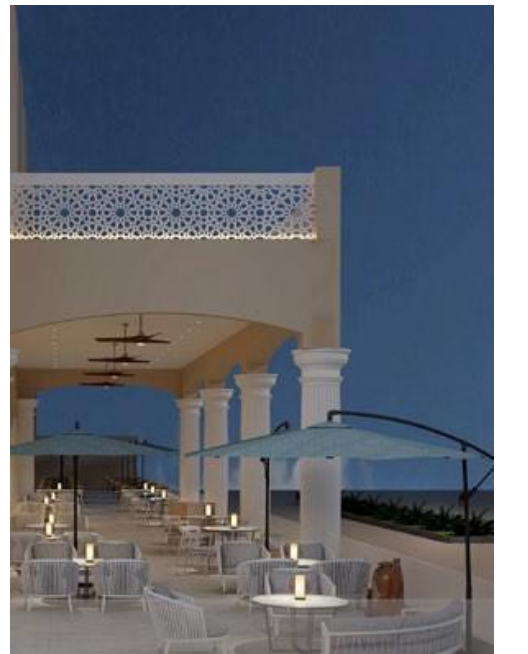
Morocco Coffee Shop



RECEPTION AND FACILITIES BUILDING 1ST FLOOR PLAN



Timeless Modern Elegance.
Simple & Elegant Low-key Luxury.
Elheigant Art.



All Day Dining & Kids Zone

Elegant & Natural Human Design.
New Fashion of Classical Furniture.
Just the Right Geometric Beauty.

Radisson Blu

Hotel 02



Radisson BLU



Radisson Blu Hotel



Poetic Aesthetics Derived from
Nature. Simple & Elegant Low-key
Luxury.
Artistic Sense with Full Personality.



Radisson Blu Hotel



Poetic Aesthetics Derived from Nature. Simple & Elegant Low-key Luxury. Artistic Sense with Full Personality.

Radisson Blu Hotel



Poetic Aesthetics Derived from Nature. Simple & Elegant Low-key Luxury. Artistic Sense with Full Personality.

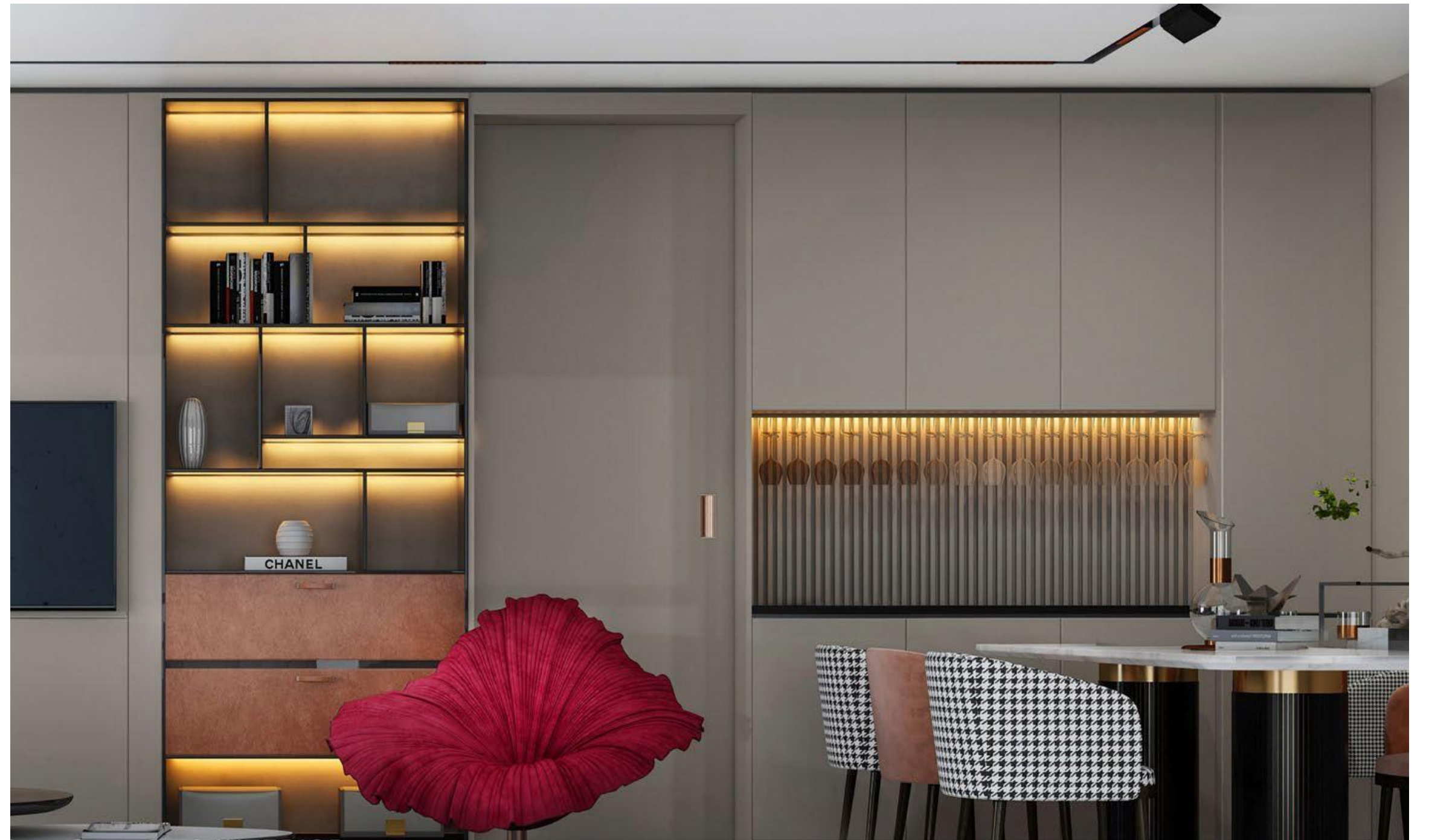


INNOVATIVE OFFICE

03



INNOVATIVE OFFICE



Artistic Sense with Full Personality.
The ultimate living solution that
perfectly
balances aesthetic and functionality.





INNOVATIVE OFFICE



Artistic Sense with Full Personality.
The ultimate living solution that
perfectly
balances aesthetic and functionality.

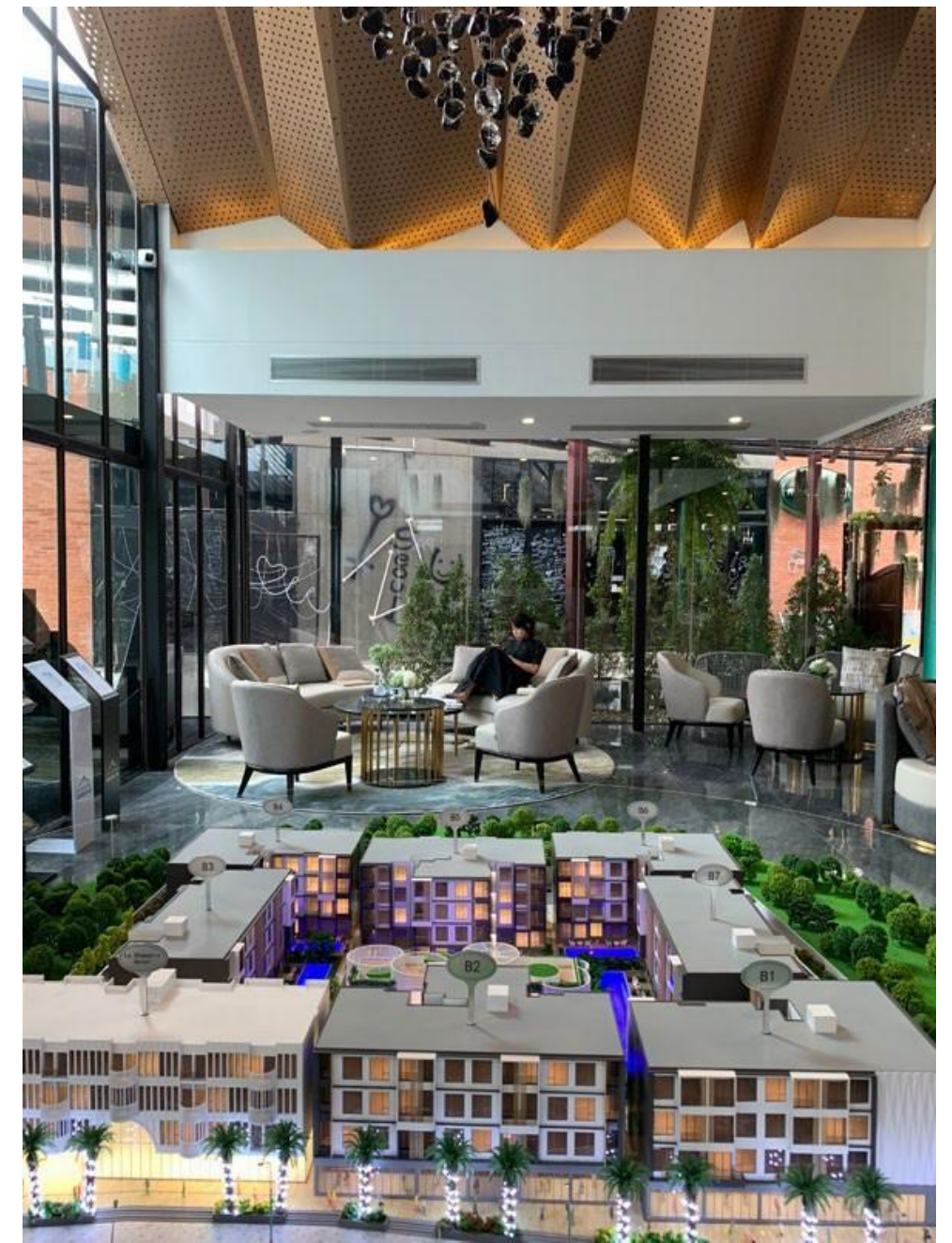




SALES LOUNGE

04





SALES LOUNGE



The Art of Living.
Aesthetical Harmony in Every Detail.
The Epitome of Modern Minimalist
Aesthetics.





The Art of Living.
Aesthetical Harmony in Every Detail.
The Epitome of Modern Minimalist
Aesthetics.



INNOVATIVE OFFICE



The Art of Living.
Aesthetical Harmony in Every Detail.
The Epitome of Modern Minimalist
Aesthetics.



ELITE

HOUSING

05



Show the Beauty of the East with Originality. New Fashion of Classical Furniture.

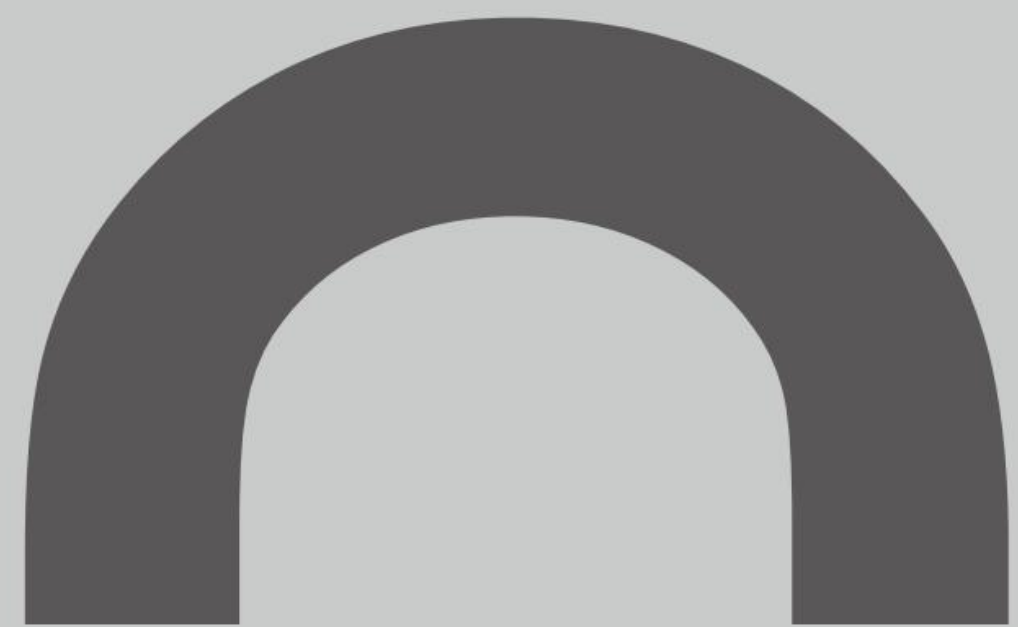


Poetic Light and Shadow
Integrated into Nature.

Just the Right Geometric Beauty.

ELITE HOUSING





Cooperator

合作伙伴



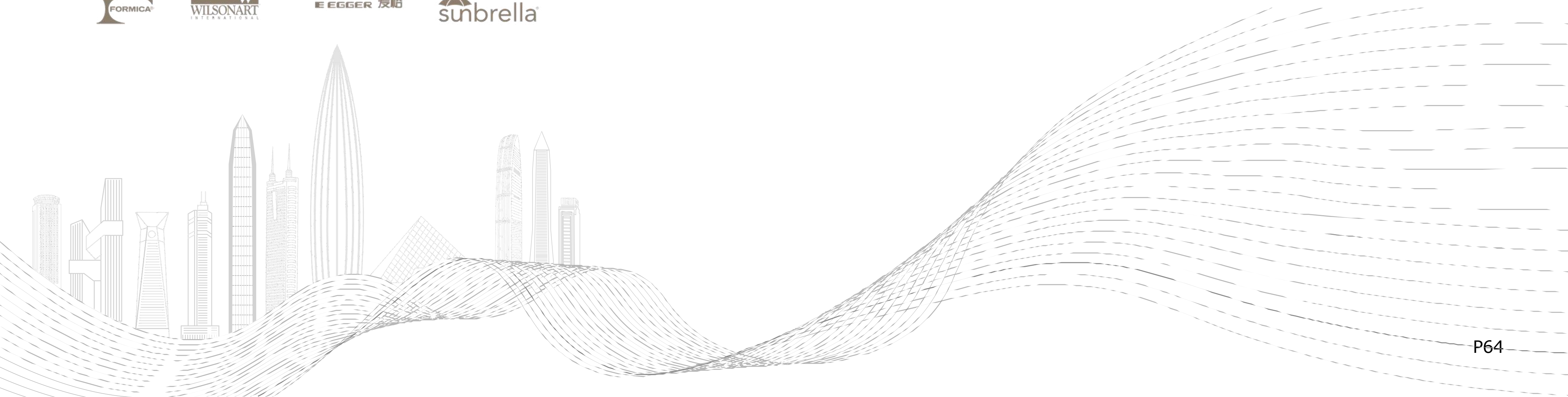
BUILDING MATERIAL BRAND

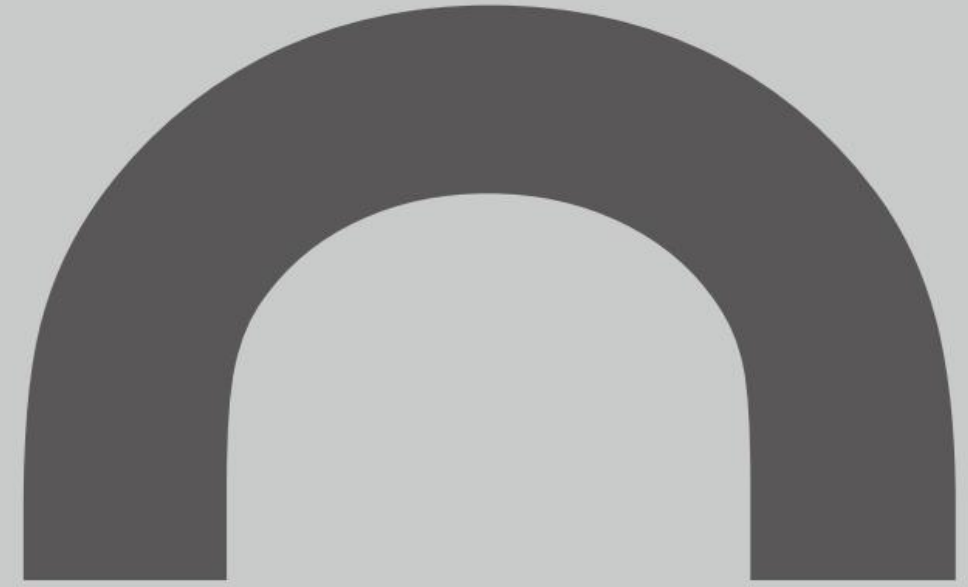
建材合作品牌



HOTEL BRAND

酒店合作品牌





**Joinery
Furniture**

固装单品

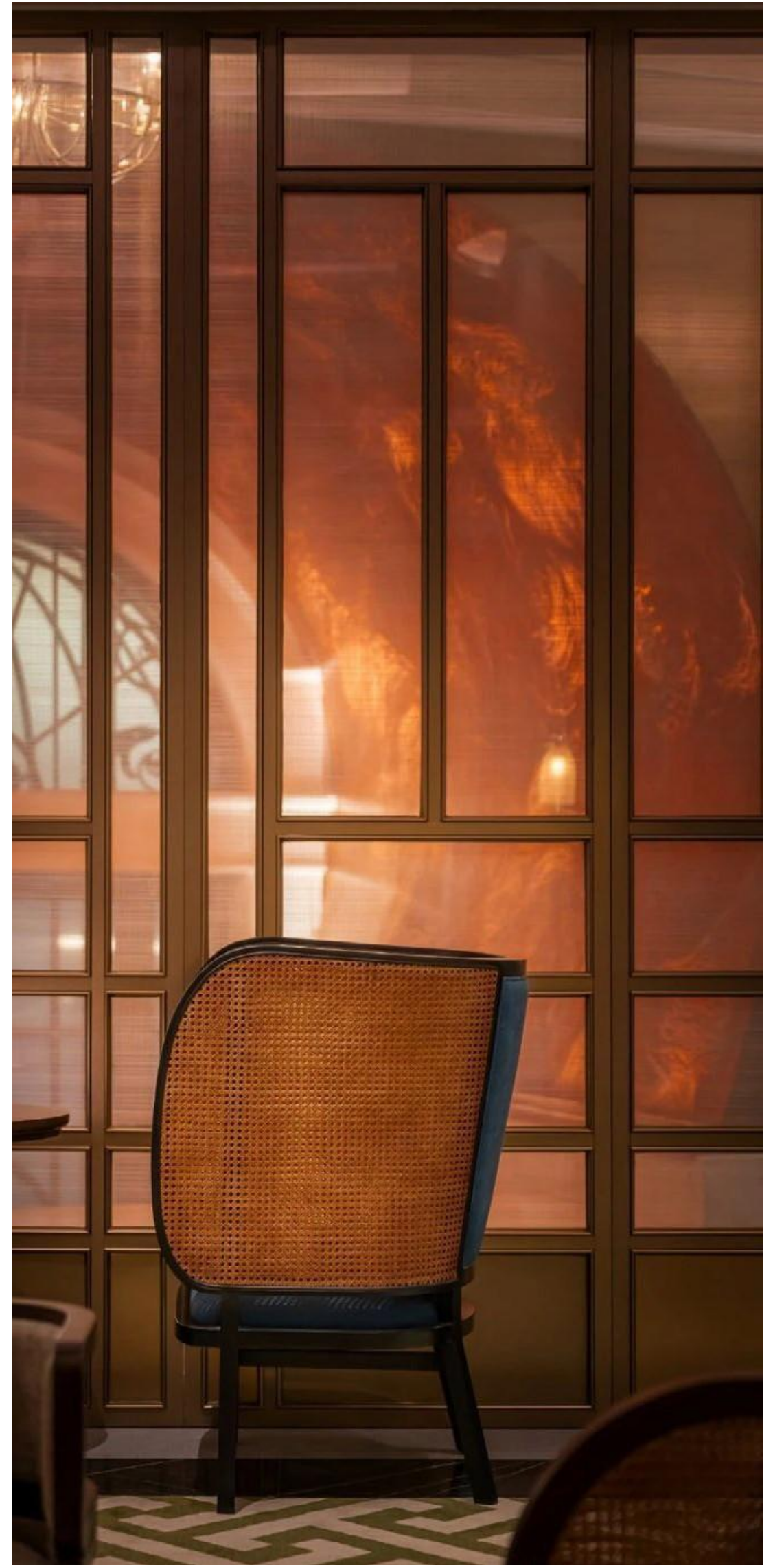




BACK GROUND WALL

STORAGE





PARTITION

05

**Designer
Furniture**

设计师单品



DFUP-3019



DFUP-3045



DFUP-3046



DFUP-3047



DFUP-2020



DFUP-2021



DFUP-2022



DFUP-2023



DFUP-2024



DFUP-2025



DFUP-2026



DFUP-2027



DFUP-2028



DFUP-2029



DFUP-2030



DFUP-2031



DFUP-1001



DFUP-1002



DFUP-1003



DFUP-1004



DFUP-1005



DFUP-1006



DFUP-1007



DFUP-1008



DFUP-1009



DFCG-
T1944



DFCG-
T1903



DFCG-
T1910



DFCG-
T1922



DFCG-
T1932



DFCG-
T1949





DFCG-
C2021



DFCG-
C2022



DFCG-
C2023



DFCG-
C2024



DFCG-
C2025



DFCG-
C2026



DFCG-
C2027



DFCG-
C2028



DFCG-
C2029





DFCG-B1901



DFCG-B1902



DFCG-B1903



DFCG-B1904



DFCG-B1905



DFCG-B1906



DFCG-B1907



DFCG-B1908



DFCG-B1909



DFCG-B1910



DFCG-B1911



DFCG-B1912



DFCG-3010



DFCG-3011



DFCG-3012



DFCG-3021



DFCG-3013



DFCG-3014



DFCG-3015



DFCG-3016



DFCG-3017



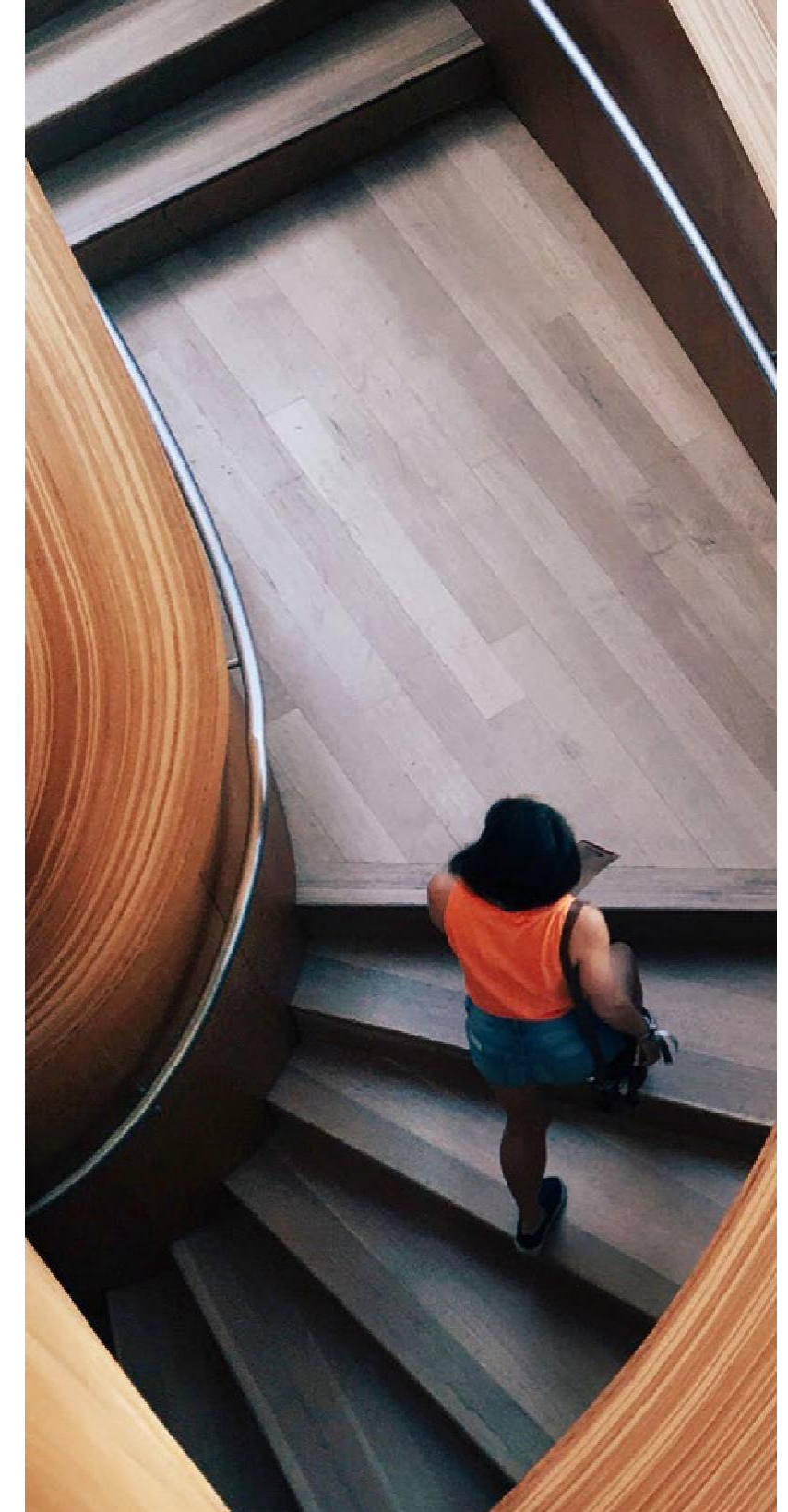
DFCG-3018



DFCG-3019



DFCG-3020



CHINA
Head Office Add.:
No. 8 Dongda Road, Longjiang Town, Foshan City, Guangdong
Province, China-528318
Email: sandy@creative-furnishing.com
michelle@creative.furnishing.com